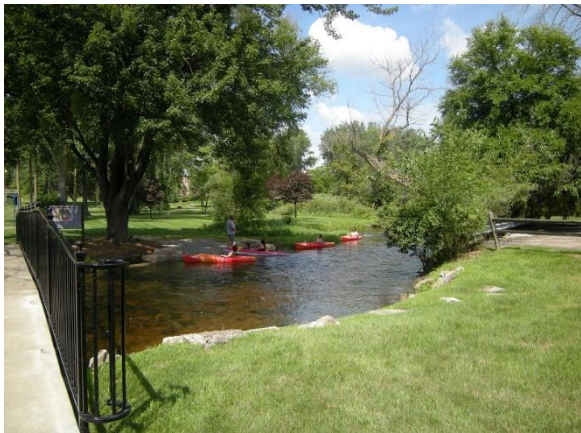


SOUTHERN LAKES REGIONAL METROPOLITAN PARKS AND RECREATION DISTRICT FIVE-YEAR MASTER PLAN

2022- 2027



SLPR
SOUTHERN LAKES
PARKS & RECREATION



ROWE PROFESSIONAL
SERVICES COMPANY

I.	Introduction	1
II.	Community Description	2
III.	Administrative Structure	5
IV.	Recreation Inventory	11
	Inventory of Facilities.....	11
	Parks	11
	Other Recreational Facilities/Attractions	11
	Local Parks and Facilities	12
	Regional Recreation Facilities and Parks	27
	Genesee County Parks and Recreation Commission Facilities	30
V.	Planning Process	37
	Basis for Action Plan	38
	Public Participation Survey:	38
VI.	Goals and Objectives	39
VII.	Action Plan	41
	Conclusion	45

LIST OF TABLES

Table 1: Budget Analysis	8
Table 2: Existing Recreation Facilities.....	25
Table 3: Regional Parks Facilities	33

LIST OF FIGURES

Figure 1: Administrative Structure	7
------------------------------------------	---

LIST OF MAPS

Map 1: Location Map.....	4
Map 2: Non-Motorized Recreational Trail Priorities Map	28
Map 3: River Access Points	29

LIST OF APPENDICES

Appendix A: Resolutions

Appendix B: Recreation Plans

1. City of Fenton Five-Year Recreation Plan
2. City of Linden Five-Year Recreation Plan
3. Fenton Township Five-Year Recreation Plan

Appendix C: Meeting Agendas

Appendix D: Survey Responses

Appendix E: SLPR Charter

Appendix F: MDNR Documentation

LIST OF ACRONYMS

ADAAG	Americans with Disabilities Accessibility Guidelines
AHCP	Aquatic Habitat Grant Program
CDBG	Community Development Block Grants
DDA	Downtown Development Authorities
FARR	Fenton Area Resources and Referral
LAFF	Linden, Argentine, Fenton and Fenton Township
LWCF	Land and Water Conservation Fund
MDNR	Michigan Department of Natural Resources
MEDC	Michigan Economic Development Corporation
MNRTF	Michigan Natural Resource Trust Fund
MTA	Mass Transportation Authority
SLPR	Southern Lakes Regional Metropolitan Parks and Recreation District
TAP	Transportation Alternatives Program

I. INTRODUCTION

The residents of southern Genesee County enjoy a diverse range of parks and recreation facilities, provided by the various cities, Genesee County, and the local school districts. To maintain and improve the quality of life for its residents, the different communities must take an active role in the delivery of recreation opportunities.

Southern Lakes Regional Metropolitan Parks and Recreation District (herein known as SLPR), inclusive of the City of Fenton, Fenton Township, and the City of Linden, is an organization charged to operate and provide recreational programming opportunities for community members. Founded in November 2000 by a vote of the people of Linden, Fenton, and Fenton Township (under the Metropolitan District Act, PA 312), SLPR continues to provide oversight over all recreational programming in southern Genesee County. Along with recreational opportunities for the youth, SLPR provides oversight and management for multiple community events, including the Fenton Farmer's Market, the "Back to the Bricks" Tune-Up Parties in Fenton and Linden, concert programs by the river and specialized mini-events for larger venues like the Fenton Street Experience. The organization has continued to provide community education programming to Fenton Area Public Schools.

SLPR has created this "Five-Year Parks and Recreation Plan" as a useful tool to guide the development and preservation of the park facilities and programming, in a manner that is consistent with its mission of "establishing, maintaining and operating a system of parks, recreation facilities and programs." This recreational plan will also make SLPR eligible for various grants made available through the Michigan Department of Natural Resources (MDNR). In 2013, the State of Michigan recognized SLPR as a DNR Park Authority.

This plan is divided into separate sections that represent the planning process used in its development. In addition to this introduction, the plan contains:

- ❖ **Community Description:** An overview of the community's current and projected social, physical, and economic characteristics.
- ❖ **Administrative Structure:** Identifies the entities responsible for administration of the park and recreation programs and facilities provided throughout the city.
- ❖ **Parks, Facility, and Program Inventory:** Describes the specific parks, facilities, and programs that are offered through SLPR.
- ❖ **Planning Process:** Describes the participatory process by the community and other partners; process will discuss the community description, recreation inventory, public participation, analysis, action program, and plan completion and adoption.
- ❖ **Basis for Action:** Analyzes the programs and facilities and contains a description of the public involvement process used in development of the plan.
- ❖ **Action Plan:** Identifies the plan's goals and objectives, all project and system recommendations, and a five-year plan for investment.

The Five-Year Parks and Recreation Plan will be used as a solid foundation for future recreational facilities and programming improvements through the services rendered by SLPR, as well as continued investments and policies that will continue to support a healthy, desirable quality of life for the residents in the service area.

II. COMMUNITY DESCRIPTION

SLPR is in the southern corner of Genesee County, bordering Oakland County to the east and Livingston County to the south. Residents from Fenton Township, Argentine Township, Tyrone Township, Mundy Township, Linden, and Fenton take advantage of the programs offered by the regional recreation service provider. SLPR service area is in the southwestern portion of Michigan's Lower Peninsula; 60 miles northwest of Detroit, 10 miles southwest of Flint.



Cities/Townships	Population
<i>Argentine Township (Genesee County)</i>	7,091 (2020 Census)
<i>Fenton (Genesee County)</i>	12,050 (2020 Census)
<i>Fenton Township (Genesee County)</i>	16,843 (2020 Census)
<i>Linden (Genesee County)</i>	4,142 (2020 Census)
<i>Mundy Township (Genesee County)</i>	15,281 (2020 Census)
<i>Tyrone Township (Livingston County)</i>	10,432 (2020 Census)

The municipalities included in SLPR are primarily a residential community; and boasts numerous aquatic recreational attractions as well as currently experiencing commercial development growth.

The land use characteristics of the service area provided by SLPR includes land that is described as residential and rural agricultural with mixtures of retail, trade, and services located in the downtown areas of Fenton and Linden.

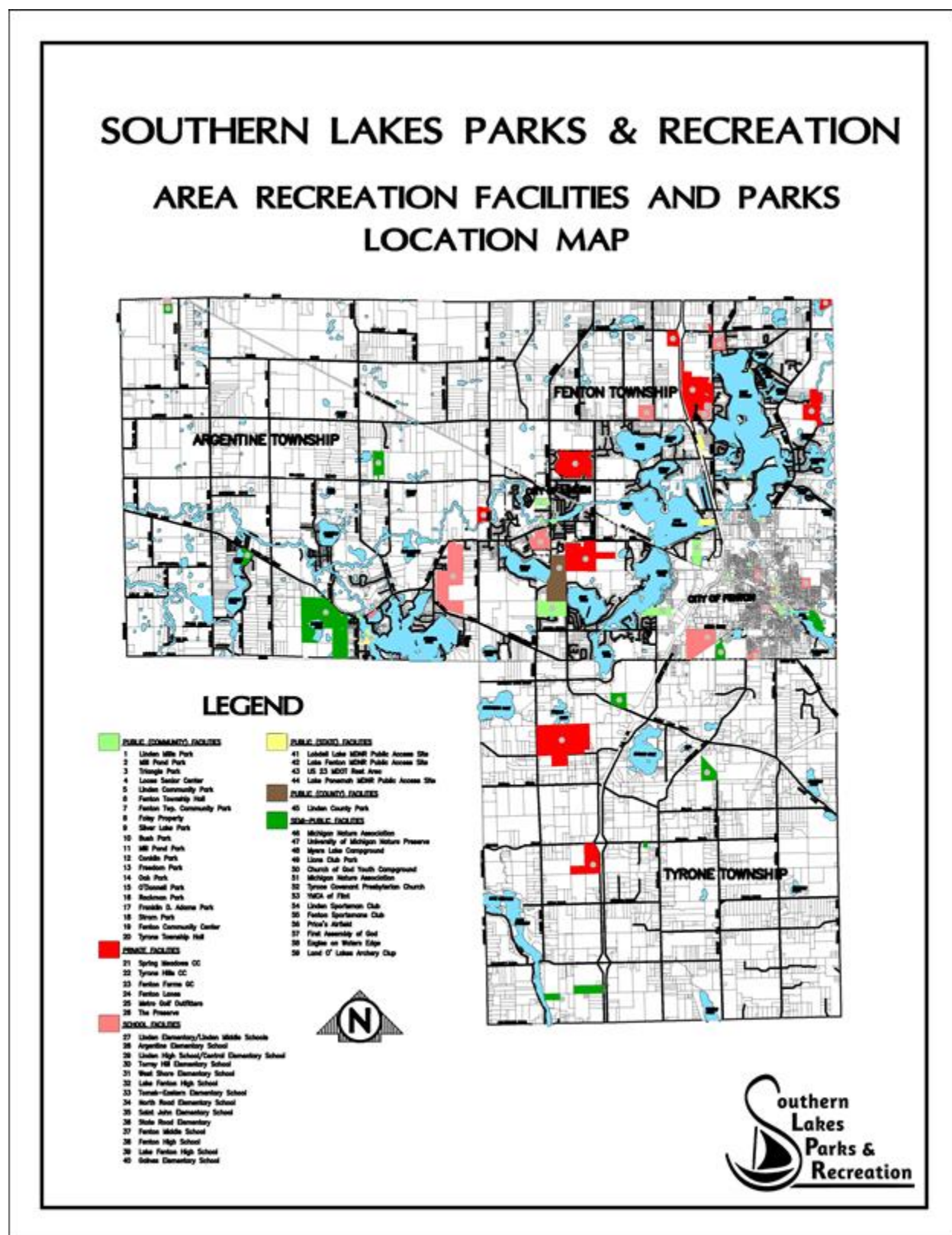
Primary transportation connections through the area include US-23, which runs from north to south, connecting to I-75 south of Flint. Bus/train stations are located 15 miles northwest in Flint; aviation transportation is also located in Flint through Bishop International Airport which operates flights to destinations to various locations in the country. Local public transportation is provided through the MTA (Mass Transportation Authority), which operate routes in and around the SLPR

area. The MTA also provides curb-to-curb service in certain areas of Genesee County including the area around SLPR.

Genesee County is in the southeastern section of Michigan, where “lake effect” weather conditions are not as great of a concern as in other areas of the state. Average annual precipitation is 32.3 inches, with an average snowfall of 36.7 inches. The average temperature in the winter is 15 degrees; the average temperature in the summer is 82 degrees.

Water resources in this section of Genesee County are plentiful with the largest water resource being Lobdell Lake. There is also a public access point for citizens through Lobdell Lake. Other resources include the Shiawassee River, Silver Lake, Lake Fenton, Lake Ponemah, Byram Lake, and Pine Lake.

Map 1: Location Map



III. ADMINISTRATIVE STRUCTURE

SLPR is the first of its kind in the state of Michigan; acting under MCL Act 312 – The Metropolitan District Act of 1929. Under this act, the state allows “two or more” municipalities to incorporate into a metropolitan district for the purpose of “acquiring, owning, operating and maintaining properties”. In 2000, the communities of Fenton Township, City of Linden, and City of Fenton jointly agreed upon a charter to fund the regional recreational authority. SLPR is operated from a 0.4 mil operating millage, which generated \$484,000 in 2021.

Currently, SLPR does not own its own properties and therefore does not have a separate office or location housing its programs. The current administrative offices and storage facilities are in the Fenton Community and Cultural Center (FCCC), while programming opportunities are offered in all school districts as well as the FCCC.

The organization structure of SLPR includes a district commission; made up of two (2) members from each participating city or township. The commission acts as the legislative body of the district and holds the authority to enact laws, ordinances, and regulations, to adopt such resolutions as it shall deem proper, develop goals and objectives of the district, and to act as the general policy making body within the district. The commission is also charged with hiring the Executive Director, who is charged to execute the goals and objectives of the commission. The current members of the district commission are provided in Figure 1.

Day-to-day operations are handled by the Executive Director. According to the charter for SLPR, the Executive Director “may hire such full and part time staff to carry out the commissions programs and operation.” The departmental structure is identified in Figure 1. The Executive Director is charged with submitting the proposed annual budget, as well as other financial projections to the commission to approve, plan, conduct, and operate programs that meet the needs of the citizens of the district (as approved by the commission). Currently, he supervises the following positions:

- ❖ Marketing, Enrichment, and Grant Coordinator
- ❖ Program Coordinator/Office Manager
- ❖ Accounting/HR Coordinator
- ❖ Custodian/Maintenance Staff/Receptionists
- ❖ Auxiliary Staff
- ❖ Enrichment Program Instructors
- ❖ Aquatic Director
- ❖ Gymnastics Director
- ❖ Dance Director
- ❖ Fitness Director
- ❖ Athletic Programmer/FAPS Scheduler
- ❖

Current Funding Sources

Current funding sources are made available from an operating mileage that was approved by the residents of the City of Fenton, City of Linden, Fenton Township, initially in 2000.

Role of Volunteers

Volunteers continue to be a huge support system for the programming operated through SLPR. Parent volunteers are just a few of the collaborations that have been fostered from the recreational programming provided. Volunteer groups that work with SLPR include Flag Football, Wrestling, Swimming, Keepers of the Shiawassee, Happening in Linden Committee, Fenton Lakes Sportsmen Club, LOOSE Senior Citizens Center, NHS students from all three high schools, and various other community groups. The Downtown Development Authorities (DDA) of Linden and Fenton also provide support and volunteers to various programming provided through SLPR.

LAFF Pathways, Inc. (Linden, Argentine Township, Fenton and Fenton Township) is a Michigan non-profit organization that was established in 2015 with the goal of supporting non-motorized trails throughout the SLPR service area. LAFF has been involved in previous discussions with trail development in communities and partnerships with preserving trails and is the major fund raising organization for the pathways in southern Genesee County.

Corporate sponsors also volunteer their time and equipment to ensure various other programming throughout the service area, such as Randy Wise Buick/GMC that supplies driver's education vehicles for use by area residents.

Relationships with school districts, other public agencies, or private organizations

School districts in the SLPR boundary include Lake Fenton Community Schools, Fenton Area Public Schools, and Linden Community Schools. SLPR uses the existing facilities made available from the local school districts to provide space for recreational activities, such as swimming/aquatics, basketball, and other community involvement programs. Also, SLPR also provides community education programming for Fenton Area Public Schools. In the Linden School District, the community organization "Project Graduation" works with the authority for the support of the graduating classes from Linden High School. Additional public/private partnerships include the Flint & Genesee Group (formerly the Flint & Genesee Chamber of Commerce), which has aided with the Summer Youth Initiative for SLPR. The Fenton and Linden Regional Chamber of Commerce, the Fenton Arts Council, Fenton Arts and Cultural Commission, Fenton Area Resources and Referral (FARR), and the Genesee County Parks and Recreation have all recently become partners with SLPR. Recently, the authority has also partnered with the Sylvester Broome Empowerment Village in Flint for their Gus Macker 3x3 basketball tournament.

Relationship between the Authority or Commission and Recreation Department of Participating Communities

SLPR has been successful in the 21 years since its inception through the collaborations between the communities represented. Members of the board of commissioners are representatives of the communities that are a part of SLPR; meaning that the concerns, goals, and objectives of each municipality are represented in the decision-making of the regional authority. Also, with programming, all recreational activities are open to the residents of Fenton Township, Argentine Township, Tyrone Township, Mundy Township, Linden, and Fenton.

Figure 1: Administrative Structure

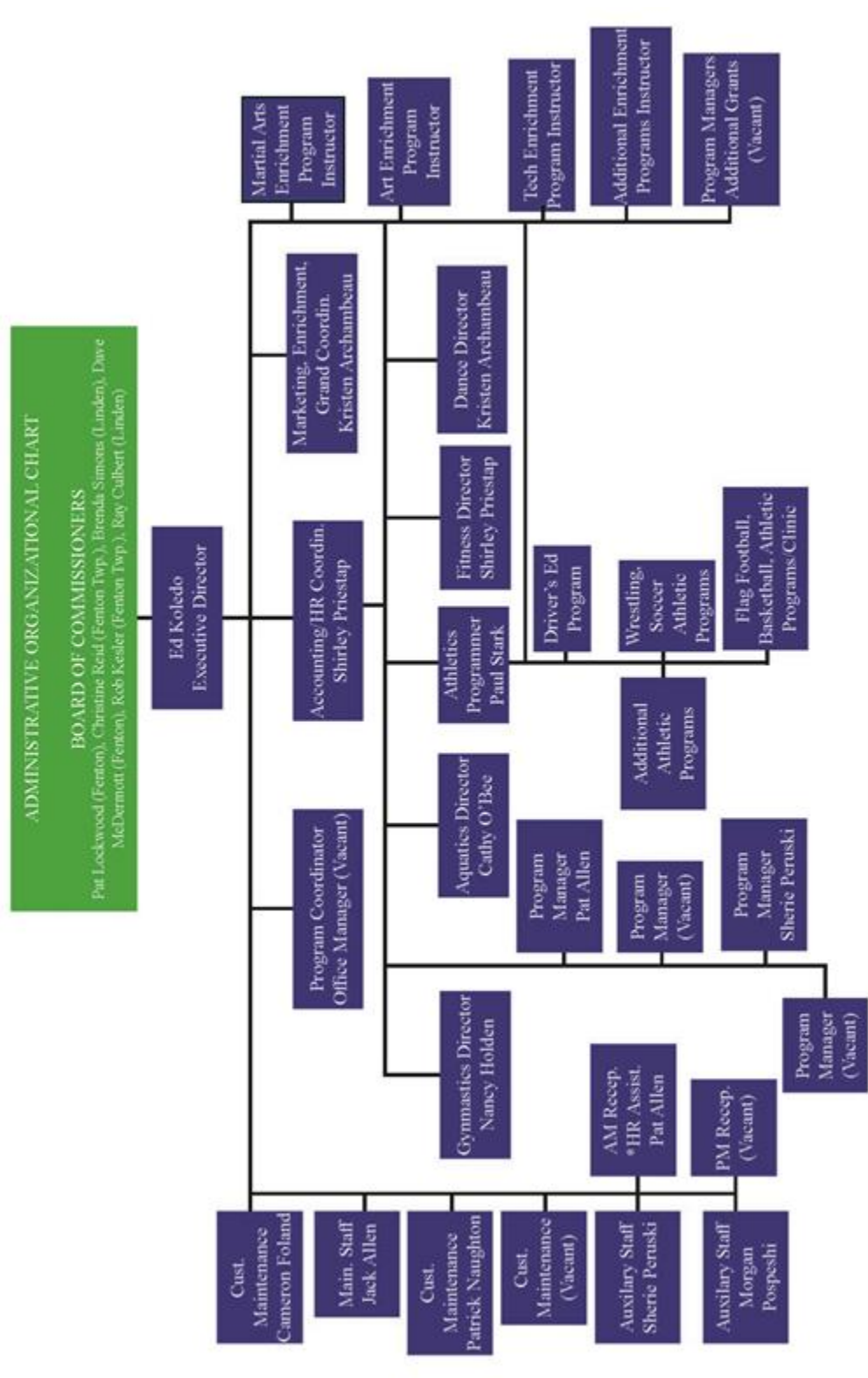


Table 1: Budget Analysis**SOUTHERN LAKES PARKS & RECREATION
2020 ACTUAL BUDGET SUMMARY**

The Budget Narrative contains the summarized list of Southern Lakes Regional Metropolitan Parks & Recreation District's Chart of Accounts and the recommended budget for each of these accounts.

GENERAL FUND - ADMINISTRATIVE REVENUE

Millage	\$ 463,530.67	
Interest & Dividends	35.94	
Misc. Revenue	1,626.58	
Donations	5,000.00	
Administrative Fees Collected	6,117.39	
TOTAL ADMINISTRATIVE REVENUES		\$ 476,310.58

RECREATION REVENUE

Programs	375,130.02	
Fenton Community & Cultural Center Reimbursement	15,788.38	
Fenton Schools Facility Rental Income	3,486.23	
TOTAL RECREATION REVENUES		\$ 394,404.63

TOTAL REVENUES **\$ 870,715.21**

GENERAL FUND - ADMINISTRATIVE EXPENSES

General Administrative Expense	240,201.86	
Loose Appropriations	(A) 73,000.00	
TOTAL ADMINISTRATIVE EXPENSES		\$ 313,201.86

RECREATION EXPENSES

Programs	386,525.18	
LF Schools Utilities Reimbursement	0.00	
Fenton Schools Utilities Reimbursement	0.00	
Linden Schools Utilities Reimbursement	0.00	
Fenton Community & Cultural Center	15,788.38	
TOTAL RECREATION EXPENSES		\$ 402,313.56

TOTAL EXPENSES **\$ 715,515.42**

NET INCOME **\$ 155,199.79**

SOUTHERN LAKES PARKS & RECREATION

2021 APPROVED BUDGET SUMMARY

The Budget Narrative contains the list of Southern Lakes Regional Metropolitan Parks & Recreation District's Chart of Accounts and the recommended budget for each of these accounts.

GENERAL FUND - ADMINISTRATIVE REVENUE

Millage	\$ 484,000.00	
Interest & Dividends	400.00	
Misc. Revenue	5,100.00	
Administrative Fees Collected	6,200.00	
TOTAL ADMINISTRATIVE REVENUES		\$ 495,700.00

RECREATION REVENUE

Programs	597,348.00	
Fenton Community & Cultural Center Reimbursement	35,000.00	
Fenton Schools Facility Rental Income	6,000.00	
TOTAL RECREATION REVENUES		\$ 638,348.00

TOTAL REVENUES **\$ 1,134,048.00**

GENERAL FUND - ADMINISTRATIVE EXPENSES

General Administrative Expense	341,819.00	
Loose Appropriations	50,370.00	
TOTAL ADMINISTRATIVE EXPENSES		\$ 392,189.00

RECREATION EXPENSES

Programs	595,646.00	
Fenton Schools Facility Use	10,000.00	
Linden Schools Utilities for Facility Use	5,000.00	
Fenton Community & Cultural Center	35,000.00	
TOTAL RECREATION EXPENSES		\$ 645,646.00

TOTAL EXPENSES **\$ 1,037,835.00**

NET INCOME **\$ 96,213.00**

<u>MANAGEMENT GOALS:</u>	Contribution to Fund Equity	(35,000.00)	
	SLPR Scholarship Fund (\$15K)	(15,000.00)	
	SLPR Equipment Fund (\$17.5K)	(17,500.00)	
	SLPR Facility Fund (\$35K)	(35,000/28,713)	
			<u>(96,213.00)</u>

2021 BUDGET LOSS to Meet Management Goals **0.00**

SOUTHERN LAKES PARKS & RECREATION
2022 APPROVED BUDGET SUMMARY

The Budget Narrative contains the list of Southern Lakes Regional Metropolitan Parks & Recreation District's Chart of Accounts and the recommended budget for each of these accounts.

GENERAL FUND - ADMINISTRATIVE REVENUE

Millage	\$ 500,909.46	
Interest & Dividends	100.00	
Misc. Revenue	200.00	
Administrative Fees Collected	16,655.00	
TOTAL ADMINISTRATIVE REVENUES		\$ 517,864.46

RECREATION REVENUE

Programs	564,443.00	
Fenton Community & Cultural Center Reimbursement	30,000.00	
Fenton Schools Facility Rental Income	5,000.00	
TOTAL RECREATION REVENUES		\$ 599,443.00

TOTAL REVENUES **\$ 1,117,307.46**

GENERAL FUND - ADMINISTRATIVE EXPENSES

General Administrative Expense	497,090.00	
Loose Appropriations	60,000.00	
TOTAL ADMINISTRATIVE EXPENSES		\$ 557,090.00

RECREATION EXPENSES

Programs	503,704.55	
Fenton Schools Facility Use	19,435.00	
Linden Schools Utilities for Facility Use	5,000.00	
Fenton Community & Cultural Center	30,000.00	
TOTAL RECREATION EXPENSES		\$ 558,139.55

TOTAL EXPENSES **\$ 1,115,229.55**

NET INCOME **\$ 2,077.91**

IV. RECREATION INVENTORY

Inventory of Facilities

Currently, SLPR does not own any facilities or recreational property; the metropolitan authority is charged with overseeing the programming and activities at parks and facilities throughout the Cities of Linden, Fenton, and Fenton Township. SLPR had previously conducted a facility/property feasibility study, and analysed the data in regards to the potential for future property ownership and land management. The study contains recommendations that the commission and organization review the potential for acquiring vacant properties/buildings for possible use for recreational purposes. SLPR should evaluate acquiring properties to be developed or used by SLPR for unique conditions that do not conflict with other recreation providers, or in a partnering capacity. The following is a compiled analysis of parks and facilities that are located within the boundary of SLPR that the authority has programming oversight.

Barrier-Free Inventory

The following summaries address existing conditions and the accessibility of the park properties regarding compliance with the Americans with Disabilities Accessibility Guidelines (ADAAG). In general, all construction since 1991 was required to comply with these guidelines. A general ranking for each park was determined through site visits and documented in the parks and recreation inventory on page 25 and through the park summaries of park properties in the service area. These rankings are:

- 1 – None of the facilities/park areas meet accessibility guidelines
- 2 – Some of the facilities/park areas meet accessibility guidelines
- 3 – Most of the facilities/park areas meet accessibility guidelines
- 4 – The entire park meets accessibility guidelines
- 5 – The entire park was developed/renovated using the principals of universal design

Parks

- | | |
|----------------------------------|--------------------|
| ❖ Linden Mills Park | ❖ Mill Pond Park |
| ❖ Triangle Park | ❖ O'Donnell Park |
| ❖ Bush Park | ❖ Oak Park |
| ❖ Conklin Park | ❖ Rackham Park |
| ❖ Franklin D. Adams Park | ❖ Silver Lake Park |
| ❖ Freedom Park | ❖ Strom Park |
| ❖ Fenton Township Community Park | ❖ Millpond Park |

Other Recreational Facilities/Attractions

- | | |
|---------------------------------------------------|---------------------------------|
| ❖ Fenton Community Center at Rackham Park | ❖ Linden Elementary School |
| ❖ Fenton Intermediate School Facility | ❖ Linden Middle School |
| ❖ Fenton Schools High School/Middle School Campus | ❖ Linden High School |
| ❖ Loose Senior Center | ❖ Hyatt Elementary School |
| ❖ Fenton Township Hall | ❖ Torrey Hill Elementary School |
| | ❖ West Shore Elementary School |
| | ❖ Lake Fenton High School |

- ❖ Lake Fenton Middle School
- ❖ North Road Elementary
- ❖ Ellen Street Campus
- ❖ Shiawassee Riverwalk
- ❖ State Road Elementary
- ❖ Tomek - Eastern Elementary School
- ❖ Central Elementary School

Local Parks and Facilities

Table 2 (at the end of this section) is an inventory of the city's parks and indicates the location of sites. Data included in Table 2 are summarized and included in the following evaluation:

Linden Parks and Recreation

- ❖ **Linden Mills Park (Passive Park):** Linden Mills Park is considered a “passive park” in the downtown area of Linden. Located off Mill Street and near Mill Pond, Linden Mills highlights many amenities including the Linden Mill historical building and an outdoor natural amphitheater. Also is a connection point to the county-wide trail system via N. Bridge Street.



<i>Size:</i>	2.09 acres of land; Mills Pond runs through park
<i>Age Groups Served:</i>	All ages
<i>Location:</i>	Centrally located in the city, sandwiched between N. Bridge Street to the east, E. Broad Street to the south, and Mill Street to the north
<i>Facilities:</i>	Gazebo located on site, with sitting area, amphitheater, canoe launch, fishing, water wheel, and walking trails that connect to downtown Linden
<i>Accessibility:</i>	Accessibility ranking – 3) Park has barrier-free parking available on site and accessible seating
<i>DNR Recreation Grants:</i>	None awarded to date

- ❖ **Mills Pond Park (Passive Park):** Located on the side of Mills Pond is a small downtown railway park with a butterfly garden and seating area



<i>Size:</i>	0.39 acre
<i>Age Groups Served:</i>	All ages
<i>Location:</i>	Located on the southern border of Mills Pond near Tickner Street in Linden
<i>Facilities:</i>	No facilities
<i>Accessibility:</i>	Accessibility ranking – 2) This facility has limited barrier-free features
<i>DNR Recreation Grants:</i>	None awarded to date

- ❖ **Triangle Park (Passive Park):** Park is located between Silver Lake Court and Silver Lake Road in the City of Linden near Prince's Airport, used primarily as a picnic area.

Size: 1.26 acre

Age Groups Served: All ages

Location: Located on the southern edge of Linden, MI. Park is not developed with any equipment or parking facilities.

Facilities: Picnic area

Accessibility: **Accessibility ranking – 1)** This facility has no barrier-free features or parking access.

DNR Recreation Grants: None awarded to date



Linden High/Middle School and Central Elementary School Campus

- ❖ **Linden Community Schools** recently began work on building improvements and construction for new educational and recreational facilities in the community. Expected completion date for the work is Fall 2023.

- ❖ **Linden High School Campus:** Located in Linden, the campus provides adequate baseball and softball facilities and football practice field. New improvements include replacing sidewalks, renovated front entrance, and new fixtures in restrooms and water stations. In Linden, the schools provide the most recreational equipment for use by SLPR.

Accessibility: **Accessibility Ranking – 5)**

This facility has barrier-free features, parking access, and renovated building features to provide for accessibility.



- ❖ **Linden Middle School Campus:** Located south of Linden High School, the facility provides access to baseball/softball fields (that are shared with the high school) and a football field for the high school with running tracks – which was renovated in 2018. Also, the Middle School has recreational facilities inside of the building that are utilized by SLPR, including the gym and various classrooms for programming. New improvements identify new concrete sidewalk around the facility.

Accessibility: **Accessibility Ranking – 5)**

This facility has barrier-free features and parking access. The football field for the district is in the same area and improvements to the field have been done to enhance universal access.



- ❖ **Central Elementary** Located to the immediate east of Linden High School, Central Elementary provides playground equipment and recreational facilities that are open and

available to community members in the City of Linden and surrounding neighborhoods. Improved sidewalk connection are identified in the new bond construction and a new driveway access. It also has an outdoor basketball court for use by patrons.

<i>Accessibility:</i>	Accessibility Ranking – 4) This facility has barrier-free features. Bathrooms are slated to be renovated during the current building improvement plan.
<i>Size:</i>	236 acres
<i>Age Groups Served:</i>	All ages
<i>Location:</i>	Located on Silver Lake Road, west of Hogan Road
<i>Facilities:</i>	3 softball fields, 1 baseball fields, 3 basketball courts, 1 soccer field, 4 football fields, 4 volleyball courts (indoor/gymnasium), ¼-mile track, 1 playground, multi-purpose room, indoor gymnastics, and outdoor athletic stadium.



Hyatt Elementary/Linden Elementary Campus

- ❖ **Hyatt Elementary:** Located near downtown, the school provides opportunities for various recreation outlets with baseball/softball fields that are to the east of the building. The close proximity to Linden Elementary and its facilities also make the location prime for programming and activities. The site also includes playground equipment for all ages to use. Site improvements from the recent bond project include replacing sidewalk and new play equipment.



<i>Accessibility:</i>	Accessibility Ranking – 3) This facility has barrier-free features (i.e., parking and door openings). New architectural work well help to provide additional universal access to the entire building.
-----------------------	--------------------------------------------------------------------------------------------------------------------------------------------------------------------------------------------------------------

- ❖ **Linden Elementary:** Located to the north of Hyatt Elementary; facility and accompanying land provides recreational opportunities for students and community members. Four baseball fields are in the vicinity of both sites. Ample parking is provided around the school. The new bond construction calls for a new media center, replacing sidewalk around the building, new playground equipment, and new surfacing around the playground.

<i>Accessibility:</i>	Accessibility Ranking – 3) This facility has barrier-free features, but current equipment can be improved. Site improvements slated for completion call for new equipment which could promote accessibility.
-----------------------	---------------------------------------------------------------------------------------------------------------------------------------------------------------------------------------------------------------------

Size: 38 acres
Age Groups Served: All ages
Location: Located on S. Bridge Street and Stan Eaton Drive
Facilities: Several ball diamonds, playground equipment, track, gyms, and open space.

- ❖ **LAFF Pathway:** Phase 1 of the trail was completed in 2020 and is a 2-mile long (10'-wide) trail that begins on Lobdell Road and runs through the Linden Schools campus, then east on Silver Lake Road. A new trailhead parking lot was constructed near the entrance to the Linden Community Schools campus (off Lobdell Road). The trails' main goal was to provide new routes to the school campus and enhanced non-motorized trail routes in the community. Future expansion of the trail will include The State Bank Trail, connecting Fenton to Linden and corridors along Fenton and Owen Roads.



Accessibility: **Accessibility Ranking – 5)**
 This facility has barrier-free features and was constructed with the latest barrier-free standards. The trailhead has ample parking and accessible parking spaces. The trail width is 10 feet wide and cross slopes and running slopes meet the requirements for accessibility.

Size: 2 Miles
Age Groups Served: All ages
Location: Lobdell Road/Haviland Beach Drive to Silver Lake Road
Facilities: Walking Trail

Fenton Parks and Recreation

- ❖ **Bush Park (Neighborhood Park):** Bush Park is one of the most heavily used parks in Fenton and encompasses about 5 acres of land. It is located behind the St. John Catholic Church on North Adelaide Street and has the Shiawassee River running along the eastern edge of the site. The Rotary Club has “adopted” Bush Park and contributes money and volunteer labor each year to make improvements. The proposed county-wide trail system runs through Bush Park and provides river access to the Shiawassee River.

Size: 5.5 acres of land; Shiawassee River runs through park
Age Groups Served: All ages
Location: Centrally located in the city sandwiched between Leroy and Adelaide Streets
Facilities: Large and small play-scapes, two sand volleyball courts, swing sets, jungle gym, slides, merry-go-round, mini soccer goals, pavilion with grills, and picnic tables and a gazebo. There is also a ball diamond associated with St. John’s Catholic Parrish as well as basketball hoops belonging to St. John’s. The Shiawassee River



meanders through the park with several places being shallow enough to wade, yet deep enough for a canoe/kayak.

Accessibility:

Accessibility ranking – 3) The Park has barrier-free bathroom facilities located near Leroy Street. The play-scape has barrier-free, safe play material surrounding it.

DNR Recreation Grants: None awarded to date

- ❖ **Conklin Park (Passive Park):** This 1-acre park is located between the CNN/Grand Trunk Railroad and Silver Lake Road, east of US-23. The area contains a picnic area with a swing set and play equipment. The park is used by residents of the community as well as travelers along US-23 because it is located just east of the Silver Lake Exit off US-23. Many visitors of this park enjoy stopping to eat lunch and picnic here.



Size:

1 acre

Age Groups Served:

All ages

Location:

Located on the northwest corner of the intersection of Silver Lake Road and Poplar Street

Facilities:

Two picnic tables, two grills, and a swing set

Accessibility:

Accessibility ranking – 1) This facility has no barrier-free features other than sidewalk along the south edge of the property

DNR Recreation Grants: None awarded to date

- ❖ **Dauner-Martin Nature Sanctuary (Nature Preserve):** Nature preserve that is apart of the Michigan Nature Association with entrances on Dauner Road; complete with walking trail that connects to other focal points around Fenton.



Size:

155 acres

Age Groups Served:

All ages

Location:

Located on Dauner Road and North Leroy Street (Fenton Road) in Fenton

Facilities:

N/A

Accessibility:

Accessibility ranking – 3) Park has barrier-free parking available on site

DNR Recreation Grants: None awarded to date



- ❖ **Franklin D. Adams Park (Mini Park):** This park is located off of South Long Lake Road at the north end of the city. This park is only 1.5 acres. The play area, basketball court, and picnic area were installed over the period 1998-2002 based on recommendations of a previous park plan. Adams Parks also provides a possible trail connection to the county trail system that runs along S. Long Lake Road.

Size: 1.5 acres

Age Groups Served: All ages

Location: Situated on the southeast corner of the intersection of South Long Lake Road and Apple Tree Lane

Facilities: Swing set, half basketball court, benches and picnic tables, grills, small spring-action play equipment, trash cans

Accessibility: **Accessibility ranking – 2)** This park has sidewalks with barrier-free ramps along S. Long Lake Road, however, the remainder of the facility would not be considered barrier-free.

DNR Recreation Grants: None awarded to date



- ❖ **Freedom Park (Passive Park):** This small park, measuring only 0.35 acres in area, is located between West Shiawassee and Elizabeth Streets in the City of Fenton.

Size: 0.35 acre

Age Groups Served: All ages

Location: Located at the point of Shiawassee and Elizabeth Streets

Facilities: Gazebo and war memorials

Accessibility: **Accessibility ranking – 2)** This site has no parking; however, the gazebo is accessible. For the site to be considered universally accessible, connecting routes to the site amenities need to be on the site.

DNR Recreation Grants: None awarded to date



- ❖ **Millpond Park (Mini Park):** This park is located across from Fenton City Hall, on the north side of the Shiawassee River. This park is very popular throughout the year due to the river festivities and direct access to Shiawassee Riverwalk. The gazebo is highly used for weddings, concerts, the Christmas tree display, and many other events throughout the year. There is also a war monument at this site honoring those who have fallen in combat.

Size: 2.3 acres

Age Groups Served: All ages

Location: Located along Leroy Street between E. Shiawassee Avenue and Ellen Street

Facilities: Picnic area, play-scape, swing-set, benches, gazebo, fishing, and waterfall



Accessibility: **Accessibility ranking – 3)** North parking lot provides barrier-free parking. Connecting routes down to the river as well as accessible seating.

DNR Recreation Grants: None awarded to date

- ❖ **O'Donnell Park (Passive Park):** Located at the corner of Ellen and S. East Streets overlooking the Millpond. Park includes a picnic area with benches around the Millpond.

Size: **2 acres**

Age Groups Served: All ages

Location: Located on the southeast corner of Ellen and S. East Streets, bound on the south side by the Shiawassee River

Facilities: Park benches, river walk, large picnic deck, tennis courts, and fishing platform

Accessibility: **Accessibility ranking – 3)** River walk and deck are accessible; however, there is no accessible parking (limited to on-street parking).

DNR Recreation Grants: None awarded to date



- ❖ **Oak Park (not currently used as a park):** This 1-acre site is located off Oak Park Drive, just north of North Road and was recommended for a sale under the 2003 plan. It is currently used as a community garden.

Size: **1 acre**

Age Groups Served: All ages

Location: Located on Oak Street Drive about one block north of North Road

Facilities: Storage shed, picnic tables, and a swing set. Park is currently being utilized as a community garden.

Accessibility: **Accessibility ranking – 1)** There are no barrier-free facilities at this park.

DNR Recreation Grants: None awarded to date



- ❖ **Rackham Park (Special Use Park):** Rackham Park is named after the Rackham family because of their generous donations to the community of Fenton. They donated this parcel of land and the Community Center to the city. It is a 3-acre strip of land located along the Shiawassee River, just west of the Fenton Community Center. The area is also part of the future Shiawassee Riverwalk system.

Size: **3 acres**

Age Groups Served: All ages

Location: Located along Leroy Street behind the Fenton Community Center

Facilities: River walk, benches, tennis courts, and a bridge over the Shiawassee River



Accessibility: **Accessibility ranking – 3)** The majority of this park is accessible. However, seating options are limited. Some obstructions to sidewalk panels are damaged.

DNR Recreation Grants: None awarded to date

- ❖ **Silver Lake Park (Community/ Regional Park):** This is a city-owned Regional/Metro-Park which also serves as a local facility. It includes 300 feet of beach area with lifeguards, concessions, nature trails, picnic areas with grills, bath house, and badminton courts. The park is open year-round, but the beach is only open from Memorial Day to Labor Day. Outside of the months of late May through Labor Day, there is no fee to enter the park; fees are only applied during the peak season between Memorial Day and Labor Day. The proposed county trail is planned to run along Silver Parkway utilizing the existing sidewalk.



Size: **37 acres**, including beach frontage on Silver Lake

Age Groups Served: All ages

Location: Located off Jennings Road on the west side of the city

Facilities: 2 pavilions, several grills, hiking trails, playground equipment, and a beach with a concession stand

Accessibility: **Accessibility ranking – 3)** Currently, the restrooms and concession stand are barrier-free. Parking lot areas have not been paved, which would promote universal design (with concrete sidewalk routes).

DNR Recreation Grants: None awarded to date

- ❖ **Strom Park (Passive Park):** Strom Park is .7-acre, located off S. East Street, overlooking the Millpond. It is also slated as part of the Shiawassee Riverwalk system.

Size: **0.7 acres**

Age Groups Served: All ages

Location: Located along S. East Street on the southern bank of the Shiawassee River.

Facilities: Small covered picnic area, river trail wayfinding sign and a small boat launch.

Accessibility: **Accessibility ranking – 2)** Site has been developed but there is a lack of barrier-free parking on-site and the potential for developing a canoe/kayak launch on the site.

DNR Recreation Grants: None awarded to date.



- ❖ **Fenton Community and Cultural Center:** This building is located on approximately 3.3 acres in Fenton and is host to a variety of uses. The center is owned by the City of Fenton but is operated and maintained by SLPR. The Rackham Foundation initially provided the funding for the construction. The foundation is a perpetual endowment fund which is responsible for half of the center's income. Residents and groups are able to rent the community center for many different purposes including art and craft shows, receptions, luncheons, etc. The center itself is made of a main hall with stage, recreation room, club room, kitchen, and the new expansion provides additional space for an art room, modern restrooms, and elevator access.



- ❖ **Fenton High School and Andrew S. Schmidt Middle School Campus:** It contains multi-purpose practice fields, tennis courts, and track and field. The site lacks play equipment, hiking trails, and picnic areas and other things found in a typical community park. It does serve specific recreational needs of the community and the students. Both schools share a common campus and athletic fields. The new middle school has added new baseball diamonds, multi-purpose practice fields, and an indoor gymnasium to the list of school district facilities in the past few years. The high school recently embarked on a building expansion project – made possible by a bond proposal.



Size: 116.1 acres

Age Groups Served: All ages

Location: Located on Owen Road just east of US-23

Facilities: Several ball diamonds, a football field, a walking/running track, 2 gyms, soccer fields, and open space

Accessibility: **Accessibility Ranking – 4)** Both buildings have made improvements to provide universal access such as barrier-free parking and routes in the parking lot to the school. District is still making improvements on access in the facilities.



- ❖ **Fenton Intermediate School/Ellen Street Campus:** This school site, like the high school, has high intensity recreational facilities including a football field, soccer goals, and one baseball diamond. The school property covers only 15.7 acres and lacks the play equipment, hiking trails, picnic areas, and many other facilities found in community parks.



Size: 15 acres
Age Groups Served: Predominantly youth
Location: Located on Ellen Street between Adelaide and West Street
Facilities: Playground, ball diamond, two gyms, and a large grassy field
Accessibility: **Accessibility Ranking – 4)** This facility has plenty of outdoor space and concrete sidewalk connections. Also, there are plenty of barrier-free parking spaces. Most barrier-free parking spaces are located at least 115 feet from the parking lot to the west and 160 feet from the parking lot to the south.

- ❖ **North Road Elementary:** Considered one of the larger recreational locations in Fenton, North Road Elementary is located between North Road and Wood Street.



Size: 10 acres
Age Groups Served: Predominantly youth
Location: Located off North Road within a dense residential area
Facilities: Gymnasium, playground, basketball hoops, ball diamond, and soccer fields
Accessibility: **Accessibility Ranking – 3)** Site does have routes that connect the walking trails and playground equipment with the parking lot. Some of these routes need to be repaired. Parking area to the east of the building does not have accessible parking.

- ❖ **State Road Elementary:** This school is located on State Road, at the southern-most end of Fenton. This site has good access for children from the school as well as from the adjacent parking lot. Various groups use the ball diamonds and soccer goals for various programming.



Size: 13.2 acres
Age Groups Served: Predominantly youth
Location: Located off State Road in a residential area
Facilities: Gymnasium, large play-scape, basketball hoops, ball diamond, and large grass field with soccer goal posts
Accessibility: **Accessibility Ranking – 3)** This facility has had some renovations to improve barrier-free access. However, some modern improvements (cut-outs from the parking lot and ADA-parking to the entrance) need to be revised.

- ❖ **Tomek-Eastern Elementary:** This school site is on approximately 15.5 acres located on the east side of Fenton.

Size: 15.5 acres
Age Groups Served: Predominantly youth
Location: Located off 3rd, 4th, and 5th Streets within a dense residential neighborhood
Facilities: Gymnasium, playground, basketball hoops, ball diamond, and large grass field
Accessibility: **Accessibility Ranking – 4)** Site amenities promote ADA-accessibility. Playground equipment has been revised and adjusted to promote universal design. Parking lot has cut sections to allow for accessibility to crossing areas. Restroom facilities inside the building are accessible.

Fenton Township Parks and Recreation

- ❖ **Fenton Township Civic Community Center & Mantawauka Park (Community Park):** Site of the township office; is located off North Long Lake Road and Bowles. It is situated on the north end of Lake Fenton. Building is used for public and private meetings and other events. Mantawauka Park is open to the public and has a gazebo, picnic tables, play-scape, and a swimming area with 100 feet of sandy beach frontage.



Size: 3.88 acres, including beach frontage on Lake Fenton
Age Groups Served: All ages
Location: Located off N. Long Lake and Bowles Road
Facilities: Meeting/banquet rooms, kitchen, swimming beach, picnic area, play-scape, gazebo
Accessibility: **Accessibility ranking – 4)** All facilities meet accessibility requirements.



DNR Recreation Grants: None awarded to date

- ❖ **Thompson Road Regional Dog Park (Community Park):** Partially developed; was acquired by Fenton Township in 2012 from the Genesee County Land Bank. The dog park has two separate fenced-in areas for large or small dogs to run free. Ample parking area and a well to provide water. Future plans call for the site to be developed into a recreation area with soccer fields, basketball courts, softball and baseball diamonds, playground equipment, and parking.



Size: 34.69 acres
Age Groups Served: All ages
Location: Located off Thompson and Torrey Roads

Facilities: Park has not been developed yet; proposed amenities to park include soccer fields, baseball/softball diamonds, playground equipment, and parking facilities

Accessibility: **Accessibility ranking – 4)** Current amenities on site meet ADA accessibility but the park is still undeveloped.

DNR Recreation Grants: None awarded to date

- ❖ **Lake Fenton High School Campus:** Recently constructed in 2005, Lake Fenton High School boasts recreational facilities for tennis, baseball and softball fields, soccer fields, track, and full gymnasium. Does lack playground equipment but has consistently been used for recreational programming and activities through SLPR. Other facilities available on-site include restrooms and concession areas.

Size: **86.69 acres**

Age Groups Served: All ages

Location: Located on Lahring and Jennings Road

Facilities: Several ball diamonds, a football field, a walking/running track, gym, soccer fields, and open space

Accessibility: **Accessibility Ranking – 5)** Building was recently constructed and met ADA requirements at the time. Outdoor recreational facilities have been updated to meet current standards.



- ❖ **Lake Fenton Middle School Campus:** Formally, Lake Fenton High School; currently being used as the middle school for the Lake Fenton School District. Various recreational programming exists with facilities such as baseball and softball fields, football field and stadium, track readily available.

Size: **26.35 acres**

Age Groups Served: All ages

Location: Located on N. Long Lake and Torrey Road

Facilities: Baseball and Softball fields, a football field and stadium, a walking/running track, gym, and open space



- ❖ **West Shore Elementary & Torrey Hill Intermediate School Campus:** Located at the corner of Torrey and Lahring Roads, these facilities contain basketball courts and playground equipment that is available to all residents to use. Other amenities include restroom facilities and parking access.

Size: 30.93 acres
Age Groups Served: All ages
Location: Located on Torrey and Lahring Road
Facilities: Basketball courts, playgrounds (3), ball diamonds, and open space



- ❖ **Shiawassee Riverwalk:** The riverwalk spans O'Donnell, Mill Pond, and Rackham parks and was funded under MDNR Grant #88-160. The grant was to acquire the land connecting the parks and the land is still in use as the walkway.

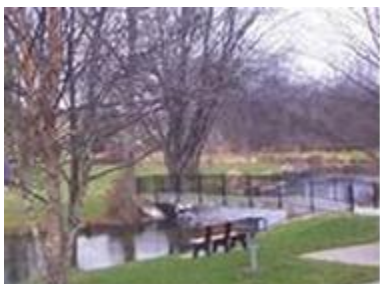


Table 2: Existing Recreation Facilities

	Acres	Play areas	Ball-fields/	Softball Fields	Soccer	Football	Volleyball	Tennis Courts	Track/Field	Basketball	Play Equipment	Picnic Areas	Hiking Trail	Pavilion/ Deck/ Gazebo	Pond/ Lake	Boat Launch	Historical Monument	Concession /Restroom	Gymnasium	Indoor Pool	River Access
School Facilities																					
Fenton Area Public Schools																					
Fenton High School/AGS Middle School Campus	116.1		3	6	2	1	1	8	1									Y	2	1	
State Road Elem. School	13.2	Y		1						1	Y	1						Y	1		
North Road Elem. School	10	Y		1	2					1	Y		Y					Y	1		
Tomek-Eastern Elem. School	15.5	Y	1		2					2	Y	1		Y				Y	1		
Ellen Street Campus	15	Y	1		1	1			1	1									2		
Lake Fenton Community Schools																					
Lake Fenton High School	86.69		2	2	3	2	1	8	1	1								Y	1		
Lake Fenton Middle School	26.3		1	1		1	1		1	1									1		
West Shore/Torrey Hill Elem. School	30.9	Y		3	1						Y							Y	2		
Linden Community Schools																					
Linden High School, Linden Middle School, Central Elem. School	236	Y	1	3	1	4	4		1	3	Y							Y	3		
Hyatt Elem. School		Y		4						1	Y							Y	1		
Linden Elem. School		Y		6						1	Y							Y	1		
Subtotal	549.69	8	9	27	12	9	7	16	5	12	7	2	1	1	-	-	-	9	16	1	-
City of Fenton Parks																					
Bush Park	5.5				1		2				Y	1		Y					1		Y
Conklin Park	1.0										Y	1									
Franklin Adams Park	1.5									1	Y	1									
Millpond Park	2.3										Y	1		Y	Y		1				Y
O'Donnell Park	2											1		Y	Y						
Oak Park	1.0																				
Freedom Park	0.35											1		Y				Y			
Rackham Park	3.0							2	3						Y						Y
Silver Lake Park	37			2			2				Y	2	Y	Y	Y	Y			1		
Strom Park	0.7											1		Y	Y	Y					
Fenton Community Center	3.3																	Y	1		
Charter Twp. of Fenton																					
Thompson Rd. Park	34.7													Y	Y	Y					
Fenton Twp. Civic Community Center and Mantawanka Park	3.88	1									Y	1		Y	Y	Y		Y			
City of Linden Parks																					

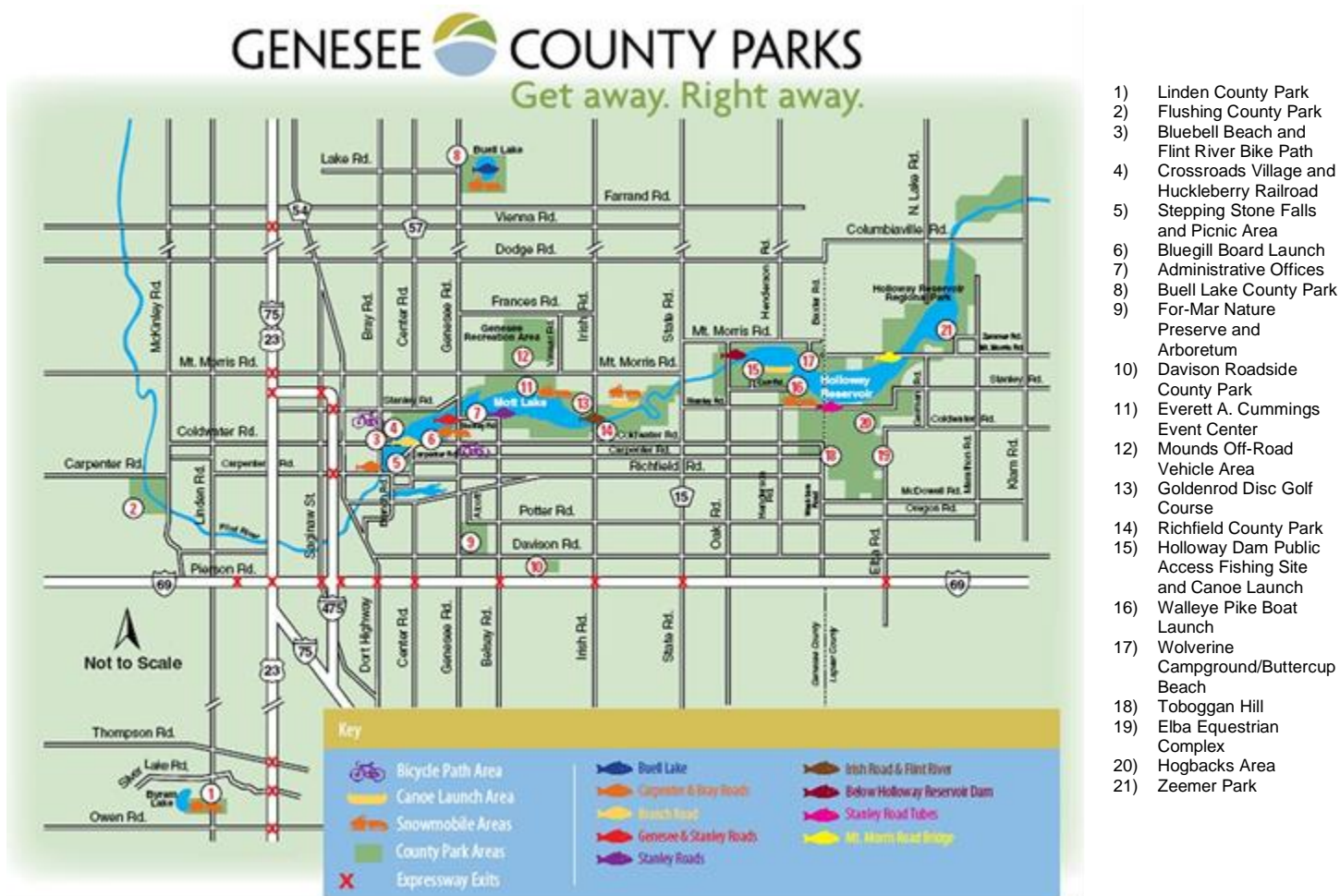
Southern Lakes Regional Metropolitan Parks and Recreation District | Master Plan 2022-2027

Linden Mills Park	2.09											1	Y	Y	Y						
Mills Pond Park	0.39											1	Y		Y						
Triangle Park	1.26											1									
Subtotal	99.97	1	-	2	1	-	4	2	3	1	6	13	3	8	8	3	1	3	3	-	3
TOTAL	649.66	9	9	29	13	9	11	18	8	13	13	15	4	9	8	3	1	12	19	1	3

Regional Recreation Facilities and Parks

Regional recreational facilities offer unique natural features that are particularly suited for outdoor recreation, such as viewing and studying nature, wildlife habitats, fishing, boating, hiking and trail use. The Genesee County Parks and Recreation Department provides active play areas in close proximity to the member-communities of SLPR. Another source of recreational programming exists with the Oakland County Parks and Livingston County Parks.

The boundaries for SLPR lie in Genesee County, which falls in the jurisdiction of the Genesee County Parks and Recreation Department. Genesee County hosts 10,000 acres of recreation areas that include activities such as swimming, boating, and hiking.

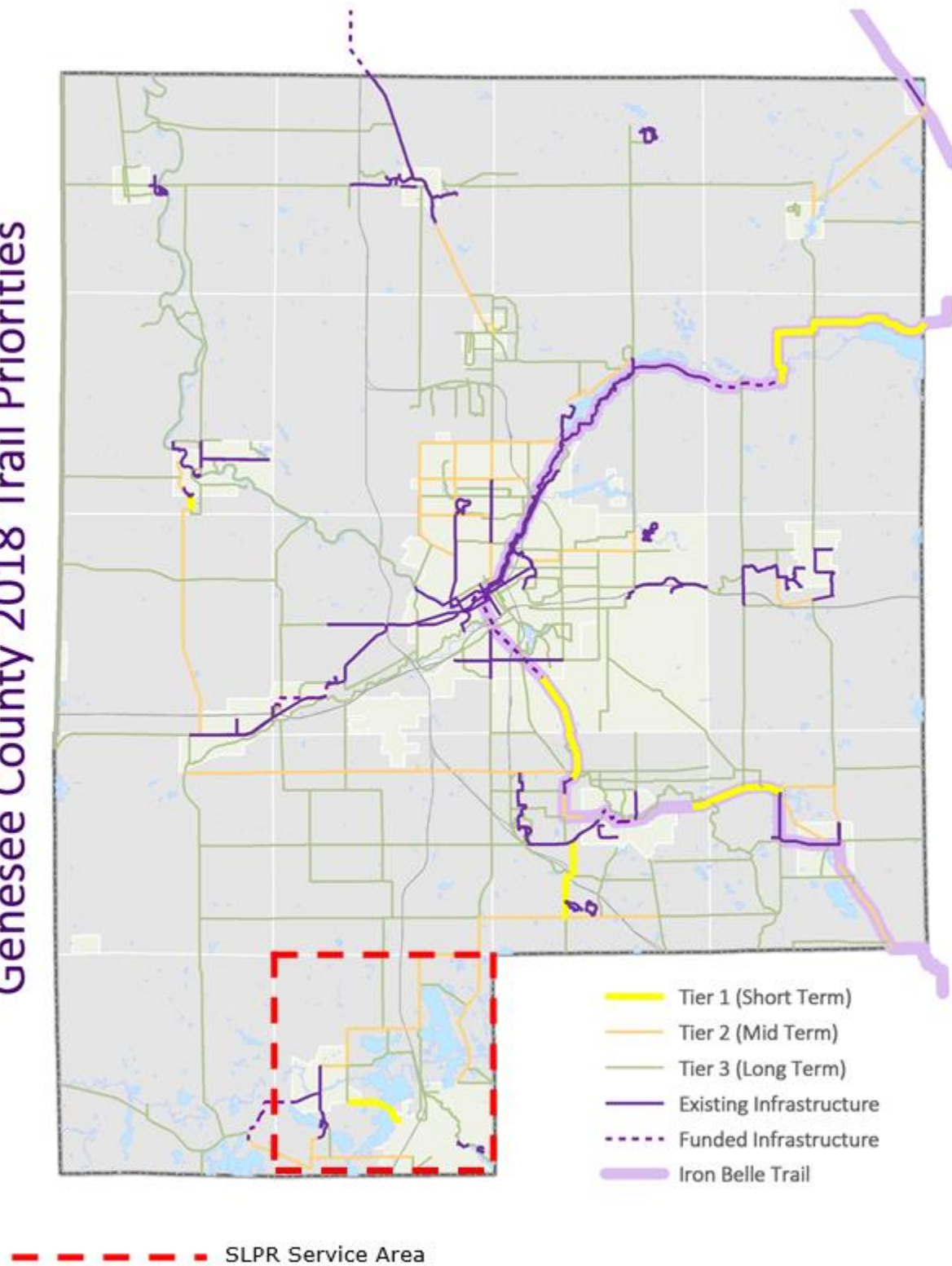


Genesee County Non-Motorized Recreational Trails

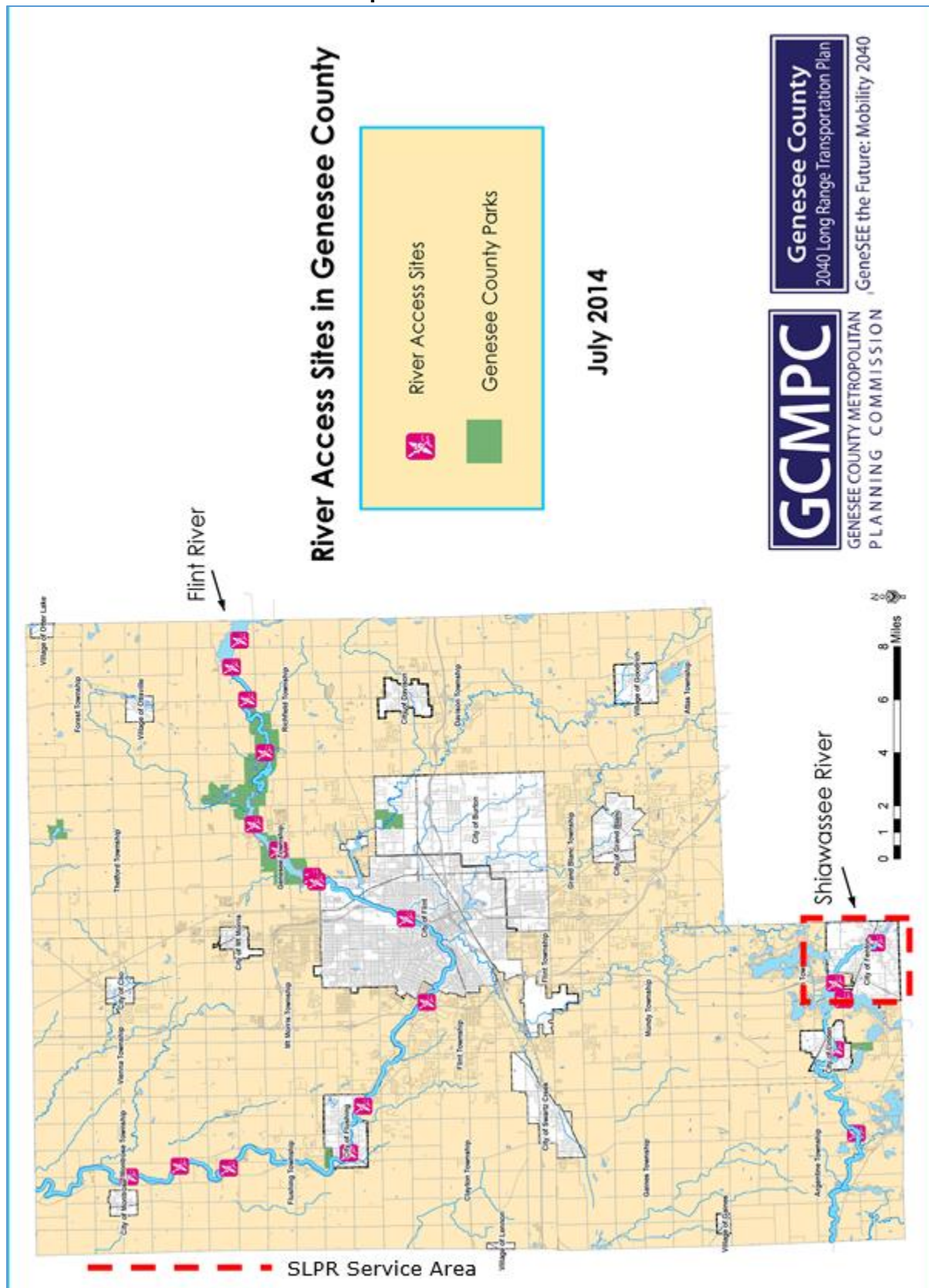
The Genesee County Metropolitan Planning Commission has recently presented the 2014 Priority Non-Motorized trail project. These trails contain both pedestrian trails and water system routes. SLPR will work in a supportive role with the Metropolitan Planning Commission in the implementation and development of recreational trail locations to serve the residents of the service area. Map 2 indicates the non-motorized recreational trail priorities map for Genesee County with the SLPR service area identified. Map 3 indicates the water trail map locations for Genesee County.

Map 2: Non-Motorized Recreational Trail Priorities Map

Genesee County 2018 Trail Priorities



Map 3: River Access Points



Genesee County Parks and Recreation Commission Facilities

Major Parks

❖ **Bluebell Beach and Flint River Trail Bike Path - Genesee Township**

<i>Size:</i>	350 acres, including 2,000 feet of frontage on Mott Lake
<i>Age Groups Served:</i>	All ages
<i>Location:</i>	Bray Road or Carpenter Road via the Flint River Trail
<i>Facilities:</i>	Splash Park, swimming beach, pavilions, playground, aquatic feature, play equipment, and .8 miles of paved trail linking Carpenter Road and Bluebell Beach

❖ **Linden County Park - Fenton Township**

<i>Size:</i>	234 acres, including 1,200 feet of frontage on Byram Lake
<i>Age Groups Served:</i>	All ages
<i>Location:</i>	Access adjacent to the Village of Linden
<i>Facilities:</i>	Swimming beach, play fields, tennis and multi-purpose courts, trails, play equipment areas, picnic areas, restrooms, and shelters

❖ **Flushing County Park - Flushing Township**

<i>Size:</i>	105 acres, with 2,080 feet of frontage on the Flint River
<i>Age Groups Served:</i>	All ages
<i>Location:</i>	McKinley Road adjacent to the City of Flushing
<i>Facilities:</i>	Play fields, horseshoe courts, preschool play equipment areas, picnic areas, and shelters

❖ **Buell Lake County Park - Thetford Township**

<i>Size:</i>	241 acres of land, 3,600 feet of frontage on Buell Lake
<i>Age Groups Served:</i>	All ages
<i>Location:</i>	Lake and Genesee Roads, relates well to Clio and Otisville. Barrier-free boat launch, trail system, and boardwalk allow for excellent access once in the park. Safe play zones need to be incorporated into a transitional plan.
<i>Facilities:</i>	Play fields, play equipment areas, picnic areas, fishing, shelters, and model airplane flying field

❖ **For-Mar Nature Preserve and Arboretum - City of Burton**

<i>Size:</i>	384 acres of land; 2 acres of water
<i>Age Groups Served:</i>	All ages
<i>Location:</i>	Access via Genesee Road and Davison Road, relates well to the City of Flint
<i>Facilities:</i>	Nature trails, interpretive buildings, and indoor and outdoor exhibits

❖ **Richfield County Park - Richfield Township**

<i>Size:</i>	345 acres, with 3,120 feet of frontage on the Flint River
<i>Age Groups Served:</i>	All ages

Location: Access via Irish Road
Facilities: Play fields, shelters, picnic areas, tennis courts, and canoe launch site

❖ ***Davison Roadside County Park - City of Burton***

Size: 9 acres
Age Groups Served: All ages
Accessibility and Location: Good - Access via Davison and Belsay Roads
Facilities: Picnic area, beginners' sledding hill, pavilion, and playground

Regional Recreational Facilities/Attractions

❖ ***Holloway Reservoir Regional Park***

The Holloway Reservoir Regional Park in Genesee and Lapeer Counties encompasses 5,500 acres of land, including 1,975 acres of water (Holloway Reservoir). The park provides open space for a variety of educational and recreational activities, including swimming, boating, picnicking, camping, and fishing. Recent shoreline stabilization efforts have been added along the Wolverine Shoreline to minimize loss of campground area due to erosion. Additional activities have been designed to increase interest in the park on both the local and regional level. Located in Richfield Township and Lapeer County, the following summarizes the area:

Size: 5,860 acres
Age Groups Served: All ages
Accessibility and Location: Approximately 15 miles northeast of the City of Flint
Facilities: Holloway Reservoir, Buttercup Beach, Walleye Pike Boat Launch, Hogbacks Area, Zemmer Road Fishing Site, Toboggan Hill, Equestrian Trail, and Wolverine Campground

❖ ***Genesee Recreation Area***

The Genesee Recreation area consists of 4,460 acres of scenic land in Richfield and Genesee Townships. Like the Holloway Reservoir Park, traditional recreational activities such as swimming, picnicking, bicycling, hiking, boating, and fishing are provided. Activities and attractions such as Stepping Stone Falls, Crossroads Village, and the Huckleberry Railroad create a greater regional appeal, as well as add to the tourism industry of the area. Located in Genesee and Richfield Townships, the following summarizes the area:

Size: 4,460 acres
Age Groups Served: All ages
Facilities: Stepping Stone Falls, C.S. Mott Lake, Bluebell Beach, Historical Crossroads Village and the Huckleberry Railroad, Bluegill Boat Launch, Everett A. Cummings Center, Goldenrod Beach Disc Golf, Richfield Park, Timber Wolf Fishing Site, Equestrian Trails, Snowmobile Trails, and Richfield Park BMX Course.

❖ ***Mounds ORV Area - Genesee Township***

Size: 370 acres, with 240 acres open to ORV use
Age Groups Served: All ages

<i>Location:</i>	Access via E. Mt. Morris Road. Genesee County Road Commission has begun the process of developing a master plan.
<i>Facilities:</i>	For motorcycles, mini-bikes, dune buggies, four-wheel drive vehicles, and all-terrain vehicles

❖ **Crossroads Village and the Huckleberry Railroad**

<i>Size:</i>	Approximately 80 acres, 4 miles of track
<i>Age and Groups Served:</i>	All ages
<i>Location:</i>	Bray Road and Stanley Road to I-475
<i>Facilities:</i>	Historical Crossroads Village, a bicentennial project, offers a glimpse of a Michigan village in the 1860 to 1880 historical period.

The Huckleberry Railroad is located within Crossroads Village and follows an 8-mile loop through the Genesee Recreation Area on a narrow-gauge rail. The train equipment is steam-powered and restored to 1800s vintage.

❖ **Stepping Stone Falls**

<i>Size:</i>	Approximately 30 acres
<i>Age Groups Served:</i>	All ages
<i>Location:</i>	Stepping Stone Falls is part of the dam which forms Mott Lake.
<i>Facilities:</i>	The height on the main fall is 11.5 feet and is lighted from sunset to midnight with changing-colored lights.

❖ **Everett A. Cummings Event Center - Genesee Township**

<i>Size:</i>	Approximately 1,740 acres from Genesee Road to Irish Road, over 300 acres accessed from Mt. Morris Road.
<i>Age Groups Served:</i>	All ages
<i>Location:</i>	Access via Mt. Morris Road and Irish Road
<i>Facilities:</i>	Trails for hiking, horses, and snowmobiles. Fishing and water access to Flint River. Duck hunting island is located along the Flint River. Location of major events such as Genesee County Fair, Color Vibe, and other functions. 18-hole Goldenrod disc golf course.

❖ **Wolverine Campground and Buttercup Beach - Columbiaville**

<i>Size:</i>	195 campsites available
<i>Age Groups Served:</i>	All ages
<i>Location:</i>	Access via Baxter Road
<i>Facilities:</i>	Campsites, beach, swimming, playground, and boat launch

Michigan Department of Natural Resources Public Boat Launch

❖ **Lake Fenton – (2 Miles North of Fenton)**

<i>Size:</i>	845 water acres
<i>Age Groups Served</i>	All ages

Facilities: Picnic area is available on the other side of Lake Fenton off South Long Lake Road; site is operated by the Parks and Recreation Division of the department of the MDNR. Site is closed from 11 p.m. until 4 a.m.; fees are charged for use. Site is closed to all swimming, wading, and bathing.

❖ **Lake Lobdell Lake – (2 Miles North of Fenton)**

Size: 545 water acres
Age Groups Served All ages
Facilities: Site is operated by the Parks and Recreation Division of the MDNR. Site is closed from 11 p.m. until 4 a.m. Fees are charged for use of a boating and access. Site is closed to swimming, wading, and bathing.

Other regional recreational facilities exist in other counties (Oakland, Livingston, and Lapeer) that are operated by the state of Michigan through the Department of Natural Resources. The table below details the different amenities to each park as well as square footage of each park.

Table 3: Regional Parks Facilities

Recreation Facility	Acres	Boat Launch	Camping	Cross Country Skiing	Fishing	Pavilions/Shelters	Picnic Area	Playground	Swimming
Oakland County									
Bald Mountain State Park	4,637	Y	Y	Y	Y	Y	Y	Y	Y
Dodge No. 4 State Park	139	Y	-	Y	Y	-	Y	Y	Y
Groveland Oaks Campground	N/A	Y	Y	-	Y	-	Y	Y	Y
Highland State Park	5,524	Y	Y	Y	Y	Y	Y	Y	Y
Holly State Park	7,470	Y	Y	Y	Y	Y	Y	Y	Y
Marshbank State Park	N/A	-	-	-	-	Y	Y	Y	-
Ortonville State Park	3,205	Y	Y	Y	Y	-	Y	Y	Y
Pontiac Lake State Park	3,700	Y	Y	-	Y	Y	Y	Y	Y
Proud Lake State Park	3,614	Y	Y	Y	Y	Y	Y	Y	Y
Seven Lakes State Park	1,378	Y	-	Y	Y	Y	Y	Y	Y

Recreation Facility	Acres	Boat Launch	Camping	Cross Country Skiing	Fishing	Pavilions/Shelters	Picnic Area	Playground	Swimming
Livingston County									
Brighton State Park	4,913	Y	Y	Y	Y	Y	Y	Y	Y
Island Lake State Park	3,466	Y	Y	-	Y	Y	Y	Y	Y
Kensington State Park	N/A	Y	Y	Y	Y	Y	Y	Y	Y
Lapeer County									
Metamora – Hadley State Park	683	Y	Y	Y	Y	-	Y	Y	Y

Private Recreation Facilities

Several privately owned recreational facilities are located within the communities of Fenton Township, Fenton, and Linden which provide additional recreational activities. Although these facilities are privately operated and often have a user fee or require membership, they were considered in the plan analysis because they meet specific community needs. Private facilities include:

- ❖ **Bowling Alleys:** Fenton Lanes and Holly Lanes
- ❖ **Dance:** Fenton School of Dance, Visions in Motion, Linden Academy – Dance and Music, Great Lakes Dance Factory, Fenton Ballet Theater, Miss Bridget's School of Dance, Peltonen School of Dance, and Dance Arts
- ❖ **Fitness Clubs:** Anytime Fitness, Planet Fitness, Powerhouse Gym, Fenton Fitness and Athletic Center, CrossFit Fenton, Fit Box, and Boomers Boot Camp
- ❖ **Golf Courses:** Spring Meadows Country Club, Fenton Farms Golf Club, The Preserve, and Tyrone Hills
- ❖ **Martial Arts:** World Martial Arts Academy, Fenton Karate LLC, Anderson Karate, TenFold Martial Arts, and Major League Fitness and Martial Arts.
- ❖ **Miscellaneous Facilities:** Camp Copneconic (YMCA), Dibbleville Yoga, Waldenwoods Resort, Deer Run Soccer Park, McBrooks Sports Complex, Fenton Lakes Sportsman Club, Linden Sportsman Club, and Painting with a Twist

SLPR Recreational Programs

Numerous recreational programming are offered and available to residents of the surrounding communities in southern Genesee County through SLPR. The program year runs year-round, and programs are constantly occurring that benefit the stakeholders in the service area. These events are broken down into Youth Sports, Youth Fine Arts, Youth Special Events, Adult Sports, Adult Special Events, Enrichment, Special Events, and Programming Inventory. Sign up and registration for programs is handled both online at the website for SLPR and also in-person at the SLPR office at the Fenton Community and Cultural Center. Although programs are held in buildings in Fenton, Fenton Township, and Linden, they are open to all residents of southern

Genesee County including Tyrone Township, Argentine Township, and Mundy Township. SLPR programs are open to everyone, regardless of their geographical location.

Youth Sports

During the school year and into the summer months, SLPR continues to provide equipment, management, and oversight of all recreational programs for Southern Genesee County. In 2020, SLPR had 3,487 registered participants in 620 program sessions, but with COVID, many programs did not run. The data from 2021 is not available due to COVID cancellations. The following is a summarized list of some of the recreational activities that are offered through SLPR.

- | | |
|-------------------------|-------------------|
| ❖ Baseball and Softball | ❖ Soccer |
| ❖ Basketball | ❖ Adaptive Soccer |
| ❖ Open Gym Nights | ❖ Swimming |
| ❖ Flag Football | ❖ Tennis |
| ❖ Golf | ❖ Volleyball |
| ❖ Gymnastics | ❖ Lacrosse |
| ❖ Martial Arts | ❖ Wrestling |

Youth Fine Arts

Fine Arts programs are also offered in SLPR, offered to children ranging from preschool age through teenagers. Some of the programs offered include:

- | | |
|------------------------------------------------------------------------------------------------------------|--------------------|
| ❖ Dance: Ballet, Tap, Hip Hop, Lyrical, Kickline, Creative Motions, Pom, Summer Dance Camps, Dance Clinics | ❖ Sculpture |
| ❖ Painting | ❖ Science |
| | ❖ Foreign Language |
| | ❖ Gymnastics |
| | ❖ Music |

Youth Special Events

The special event programs are offered through SLPR for children ranging from preschool age through teenagers.

- | | |
|--------------------------------|---------------------------|
| ❖ Special Needs Soccer Program | ❖ Spring Dance Recital |
| ❖ Youth Wrestling Tournament | ❖ Gymnastics Invitational |
| ❖ Mother/Son Dance | ❖ USA Swim Meet |
| ❖ Fall Dance Showcase | |

Adult Sports

Adult recreational opportunities are also made available to the residents in the townships and the cities. These programs are housed in the local schools but also in township parks and other locations in Fenton Township, Linden, and Fenton. In 2020, over 871 participants were registered in 150 program sessions. These programs include:

- | | |
|------------------------------------------------------------|-------------------|
| ❖ Fitness: Group Fitness Classes, Wellness Expo, Workshops | ❖ Softball |
| ❖ Golf | ❖ Adaptive Soccer |
| ❖ Martial Arts | ❖ Volleyball |
| | ❖ Water Fitness |

Adult Special Events

Program designed to provide additional recreational and engagement programs for the adults serviced by SLPR.

- ❖ Senior Holiday Lunches
- ❖ Senior Fridays
- ❖ Howling Halloween Dog Parade
- ❖ Witches' & Wizards Ball
- ❖ Health/ Wellness & Building Workshop

Enrichment

These programs are designed to provide continuing education, teach new skills, and are just for fun. The following is a summarized list of leisure programs under the supervision of SLPR.

- ❖ Book Club
- ❖ Driver's Education (Segment I & II)
- ❖ Computers
- ❖ Dance
- ❖ Painting Classes
- ❖ Variety of other Art Classes
- ❖ Foreign Language Classes
- ❖ Financial
- ❖ Health
- ❖ Music
- ❖ Pet Classes
- ❖ Safety

Special Events

Other recreational programming offered by SLPR includes the driver's education program, summer festivals and programs, Farmer's Market, and "Back to the Bricks" Tune Up Party.

- ❖ **Farmer's Markets** – SLPR oversees and manages the Fenton Farmer's Market. The market has expanded and brought countless individuals to downtown Fenton on Thursdays throughout the spring and summer. The Linden Farmer's Market, when in session, has been run by SLPR as well. The success of the market is attributed to a good working relationship between SLPR, the vendors that provide them with many opportunities for expansion and support, and the municipalities and their DDAs for all the extras they help provide during the Farmers Market.
- ❖ **Back to the Bricks** – Back to the Bricks is an annual summer event that has brought hundreds of thousands of people to Genesee County over a week-long car show. The cities of Fenton and Linden are both involved with the "Tune-Up" parties that occur during the Back to the Bricks week. During those times, cars are made available for display and numerous vendors are present. Since the adoption in 2011 as sites for the "Tune-Up" party, SLPR has been instrumental in overseeing the coordination and implementation of the festivities in Linden and Fenton. These Tune-Ups have brought an estimated 10,000 visitors to the area for these events.
- ❖ **Fenton Street Experience** – SLPR teamed up with the City of Fenton to plan a summer-long street experience in 2021 that would be as "COVID proof" as possible. The Fenton Street Experience had multiple events planned during 22 weeks of Thursday and Friday nights. These "Mini Events" were spread out in the streets of downtown Fenton and included: corn hole, skate park, street music and entertainment, concerts, kid's art display, kid's wood working, kid's gardening activities, kid's pumpkin carving/decorating, kid's corn hole and giant connect four, kid's chalk the walk, mini-golf, witches dance, Bollywood dance, Zumba – latin dance/fitness, Werq – hip hop dance/fitness, karate demonstrations, book author events, table tennis, interactive art displays, mini car shows, and a free pumpkin patch. Partnerships like this help promote SLPR as well as providing opportunities for residents to participate in various programming during the summer months.
- ❖ **Concerts in the Park** – The Fenton Concerts in the Park series is presented by SLPR and sponsored by the City of Fenton DDA. Summer concerts at the Fenton Millpond Park Gazebo are a tradition loved by the community. Spending a fun and entertaining evening

on the grass by the Millpond is the kind of activity that makes Fenton a family-friendly locale.

- ❖ **Music by the Mill** – Linden’s Music by the Mill is presented by SLPR and sponsored by the City of Linden and the Linden DDA and are held at the Linden Mill Park Gazebo, located directly across the street from the Price Crane Robinsons VFW Post 4642.
- ❖ **Art Walk** – SLPR teams up with the City of Fenton Arts and Cultural Commission to manage the Fenton Art Walk. This is a community event celebrating the arts and showcasing local and regional talent with the visual art, music, entertainment, technology integrated art, and children’s activities. Artists will display their work along the streets of downtown Fenton or inside participating businesses and at local organizations like the Fenton Community and Cultural Center. Visitors can enjoy the beautiful downtown, excellent restaurants, and purchase amazing pieces of art.

Programming Inventory

SLPR currently provides programming for the cities of Fenton, Linden, and Fenton Township. There are numerous volunteer organizations that provide athletic programs and assistance during various sports seasons.

In many communities, SLPR has taken the place primarily performed by the municipality for parks and recreation programming. This collaboration has allowed for increased participation and joint sharing of athletic opportunities and equipment.

To continue to provide quality programs, SLPR should seek a greater influence over the maintenance and operations of the facilities that the programs rely on.

V. PLANNING PROCESS

SLPR directed this updated Recreation Master Plan to be completed to provide a blueprint for future facilities, programming, and funding sources through the MDNR. Residents of the SLPR Service area were asked to provide input to provide support or new options to enhance the programming and facilities that SLPR operates/manages. The following process is discussed below:

- ❖ **Community Description** – The process began with an analysis of the authority’s physical and social characteristics. These characteristics included location, history, transportation system, natural features, and population of participating communities.
- ❖ **Recreation Inventory** – SLPR does not own any property but uses properties throughout Linden, Fenton Township, and Fenton for its recreational programming and activities. The inventory is inclusive of all properties that are available for SLPR to utilize. The authority also has an accessibility assessment that was conducted on all properties that SLPR has programs in. A list of private business, neighboring communities’ facilities, state parks, Genesee County Parks, and other locations that would be essential in providing recreational opportunities is also included in the inventory.
- ❖ **Public Participation** – On **November 8, 2021**, SLPR began collecting survey information from community members and residents of the service area. Promotion for the survey was handled by notices on Facebook and using the QR codes and allowing respondents to complete the survey on their mobile devices. The survey was completed by 125 people and the information collected was used and analyzed to develop the goals and objective

statements for the recreation master plan. A copy of the questions from the survey and the response from the participants is available in Appendix D of the master plan.

- ❖ **Analysis** – The data collected from the surveys were analyzed based on experience of staff, committee members, and board of directors. After the information is analyzed, it was compared based on financial/funding sources and the specific needs and desires of residents.
- ❖ **Action Plan** – Upon completion of the analysis, goals and objectives were determined to provide the framework for the Action Plan. The Goals and Objectives were developed at internal meeting with SLPR staff and ROWE Professional Service Company staff. The Goals and Objectives along with the Action planned were created on **November 22, 2021**.
- ❖ **Plan Completion** – After the plan was completed, it was presented to the Board of Directors and Executive Director for approval. Once the plan has been reviewed, it will be available for review for public input for 30-days. Following the 30-days, a public hearing will be held in order to solicit any additional input from residents. Following the public input, it was endorsed by the Board of Directors of SLPR, ratified by the three municipalities represented on the Board of Commissioners for SLPR, and was submitted to the MDNR for approval.

Basis for Action Plan

The previous sections of the plan provided valuable insight and information into the parks and recreation operations of SLPR. The Basis for Action Plan is set up to evaluate the information, to understand the needs and priorities for future park land, current parks and recreational facilities, and programming in the community.

There were various resources incorporated into the recreational analysis. To begin, public participation is essential in discovering the community priorities for recreation and programming. This public participation was handled by responses from a survey, through Survey Monkey, formulated by SLPR. Next, an analysis of recreation facilities such as athletic fields, playgrounds, accessibility assessment, and trails was evaluated. Current recreation programs were then evaluated to best understand future programming needs and opportunities. Finally, to ensure that all perspectives were considered, existing planning documents were reviewed to ensure that the Action Plan coincided with the current vision and goals of other related community development efforts.

SLPR is fortunate to have a surplus of land with recreational potential in the immediate service area. Opportunities that exist include the potential for turning vacant properties into the potential for park land. Also, with the potential for recreational acreage and programming, SLPR has plenty of opportunity for expanding programs to incorporate some of the desires and activities that many of the residents expressed interest in. However, with all the potential for expansion and new programming, there are areas where SLPR can make improvements with their delivery of services and partnerships within the service areas.

Public Participation Survey:

In early November, SLPR began promoting an online survey that asked respondents to give information pertaining to the status of SLPR programming and the potential for increased programming and acquiring/developing facilities. The information collected from the online survey was very critical in constructing the goals and objectives for the recreation plan. Overall, 76 percent of the respondents replied that they were satisfied with the current programs offered by SLPR. Residents that participated in the survey were from the SLPR Service Area (City of Fenton,

City of Linden, Fenton Township) – 83 percent of respondents; with another 17 percent coming from other areas in Southern Genesee County and Northern Livingston County. The results from the survey are included in Appendix D.

VI. GOALS AND OBJECTIVES

An overall guide for the recreation goals for SLPR district will be to focus efforts on developing additional recreation programming, defining key opportunities for developing SLPR recreation facilities, and supporting recreational routes throughout Linden, Fenton, and Fenton Township. Of the goals and objectives listed, the top priorities ranked in order include:

- ❖ Expand program opportunities in the SLPR service area.
- ❖ Secure key properties for ownership by SLPR.
- ❖ Construct a new recreation and administrative facility to house SLPR administrative operations and recreational programming.

The overall theme for improving recreation will be to develop and maintain recreation programming that will continue to support the growing needs of SLPR communities.

The following goals support this (not listed in any order of priority):

Goal 1: Continue to support programming in SLPR that encourage the development of new events and activities.

From the survey information compiled by SLPR, most respondents were supportive of the programs currently offered by SLPR. However, there were some instances that improvements would provide better usage by current program participants.

Objectives:

- ❖ Increase amount or type of programming to better meet needs of residents.
- ❖ Develop additional recreation activities with various municipalities and communities.
- ❖ Increase visibility of SLPR programs through various other information-sharing.
- ❖ Programs operated or facilitated by SLPR need to be marketed to all community members in southern Genesee County; and better branding of programs to identify programming as SLPR-sponsored activities.

Goal 2: Promote non-motorized connections throughout southern Genesee County and connecting them to key destinations.

The Genesee County Metropolitan Planning Commission has proposed a series of recreational trails that will connect various cities and communities to parks and recreational facilities. Currently, three different routes are proposed to operate through the SLPR service area. The added recreational trails will develop facilities that will provide greater opportunity for quality-of-life benefits and access to natural features.

Objectives:

- ❖ Coordinate with Genesee County Metropolitan Planning Commission in a support role for the location of non-motorized routes. Propose potential internal walking routes around parks and school facilities to encourage additional usage by residents.

- ❖ Support ongoing water trail branding, programs, and development.
- ❖ Continue coordination of non-motorized trails in partnership with the LAFF Pathway Inc. group.

Goal 3: Continue partnerships with various for-profit groups and educational institutions in the service area of SLPR.

SLPR continues to have a great working relationship with various school districts, volunteer groups, and the various municipalities represented on the SLPR Board of Directors. These various relationships contribute to the overall success of both programming and recreational activities in the area. The role of SLPR, in relation to public school community education programming stakeholders needs to be defined as SLPR moves forward with creating new programs and activities. Currently, there is some confusion with which entity is charged with specific duties of recreation and community education. Establishing the areas of interest by SLPR and the programs and activities that each school district would like to continue to operate would eliminate any uncertainty of programs between parents and community members.

Objectives:

- ❖ Maintain roles with existing stakeholders and monitor communications annually.
- ❖ Increase partnerships with various for-profit organizations and volunteer groups to expand program and recreational offerings.
- ❖ Explore the possibility of expanding community education programs to other school districts in southern Genesee County.
- ❖ Coordinate with the Genesee County Parks and Recreation for certain programs to enlarge the scope and recreational participation of residents in the surrounding communities (i.e. providing space for the Deer Run Soccer Authority, running programming in County parks, and partnering for grant opportunities)
- ❖ Maintain/Increase opportunities to partner with other community programming institutions like Happening in Linden, the Fenton and Linden Regional Chamber of Commerce, etc.).

Goal 4: Evaluate and pursue acquisition for park development.

Review vacant properties in the area for potential use as recreational and programming opportunities.

Objectives:

- ❖ Coordinate with the Genesee County Land Bank on potential vacant properties within the SLPR area.
- ❖ Construct recreation center along with park property around a proposed site, centrally located in the service area.
- ❖ Identify non-motorized trail access for future properties, per the Genesee County Metropolitan Planning Commission and the LAFF Pathway.

Goal 5: New capital improvement project for SLPR

As SLPR continues to expand programs and opportunities for residents, the authority must be prepared to widen its for additional participation.

Objectives:

- ❖ Evaluate alternate funding sources; develop a capital financing strategy for development projects. Pursue funding and leverage available financial resources with grants.
- ❖ Conduct a feasibility study for future SLPR administrative offices and/or recreational facility that identifies spatial needs and development of a budget.

Goal 6: Continue to modify programming and recreational activities to reflect the changing demographics, needs, and age of the population of the service area.

Currently, SLPR provides programming and activities that match the needs of the current participants within the service area of southern Genesee County. As the population of southern Genesee County continues to expand and the demographics and age group continue to change, it would be highly recommended that SLPR explore other recreational programming to match the changing needs of the community.

Objectives:

- ❖ Evaluate additional programs and activities not offered currently (per the 2021 Parks and Recreation Survey).
- ❖ Expanded senior activities with the LOOSE Center.
- ❖ Evaluate coordination role with municipalities for events and programming.

VII. ACTION PLAN

SLPR currently does not possess any property. All administrative offices and programs are either operated out of the local schools or through contractual agreements with local municipalities to coordinate recreational programming. Moving forward, it is the plan of SLPR to incorporate property and to construct a recreational facility to house offices and different programs. While many of the recommended improvements to SLPR deal with the need for physical buildings and park land; other improvements such as the non-motorized route through southern Genesee County will benefit from a support role from SLPR.

Current Programming and Partnerships

Moving forward, SLPR should continue to maintain the programming and activities currently in place for the residents of the service area. New recreational opportunities should constantly be implemented to match the demand by the community and participants.

Continue Collaborative Work with School Districts and Other Organizations

From the previous plan, SLPR continues to improve communications between the member municipalities and the authority. Residents are aware of which programs are sponsored and operated by SLPR. As more partnerships and activities are developed in the service area, being specific of the responsibilities and duties of the authority will be important for the success of the program.

Thompson Road Regional Dog Park

The Thompson Road Regional Dog Park has been developed, with the support of a volunteer groups in the area and is overseen by its own Board. SLPR will maintain a position on the park's board and continue to help facilitate planning for finance and park improvements.

Stronger Marketing and Identification

Branding will continue to be important to getting more interest and participation in programming in the authority. During the pandemic, the use of social media and other interactive resources became important; those resources will not go away – and SLPR should take advantage of reaching as many people in the service area as possible.

Regional Recreational Non-Motorized Connections

In collaboration with the Genesee County Metropolitan Planning Commission; the implementation of non-motorized trails connecting to key destinations throughout the service area is important in providing additional activities for community members. SLPR will serve in a support role towards promoting the trail system through the service area. These non-motorized routes include water trails and paved trails (i.e., LAFF Pathway). There have been proposals of extending other trails around Southern Genesee County and Northern Livingston County. Reviewing funding and expanding trails in areas that promote safe transit throughout the community would be ideal for future recreational programming.

- ❖ Regional non-motorized connections also would support active, healthy lifestyle options for residents in the community. More routes in the service area provides more walkable areas for people to connect to.

Construct and Acquire New Park Properties

As stated, currently SLPR does not possess any land or buildings to house their programming or administrative offices. SLPR intends to seek and develop feasibility studies on the potential for constructing a new facility, centrally located in the service area, that would provide administrative space and recreational programming. These plans also include outdoor recreational space for outdoor sports. The authority also seeks to acquire properties in the service area to expand outdoor recreational programming using SLPR-owned properties. Along with the feasibility studies should be studies on options for funding sources and extensive background on the specific programming that those that participate in SLPR activities have desires of engaging in.

Expanding Current Service Area to Other Communities

Currently, SLPR is represented by three neighboring communities in southern Genesee County (Fenton, Linden, and Fenton Township); however other communities have also become a part of the programming and activities around the service area. As SLPR continues to expand, the thought of adding other communities must be investigated. Residents should be asked if they would support the additional municipalities being included on the governing body.

Funding

Various grant programs can be used to leverage funds for development projects and property acquisition. A summary list of sources includes:

- ❖ **General Fund**
Continue to allow for re-investment in facilities to avoid future increased maintenance costs and ensure revenue streams when possible.
- ❖ **User Fee**
Continue to charge reasonable fees to participants of recreation programs and key facilities. Evaluate the fees annually to ensure they are providing the appropriate amount of funding to allow the programs to continue.

❖ ***Special Millage***

A property tax millage can be used to finance specific park and recreation projects such as parkland improvements and facility upgrades. A millage is an effective method to divide costs over time among all the taxpayers in the community to provide matching grant funds or finance projects out-right. A millage allows more flexibility in how the money is used than a bond.

❖ ***Bonds***

Several bond programs can be used to finance construction of parks and recreation facilities. General Obligation Bonds are issued for specific community projects and may not be used for other purposes. These bonds are usually paid for with property tax revenues. Revenue bonds are issued for construction of public projects that generate revenues. The bonds are then retired using income generated by the project.

❖ ***Michigan Natural Resource Trust Fund (MNRTF)***

Provides funding assistance for the purchase of land (or interest in land) for recreation or protection of land because of its environmental importance or scenic beauty, and the development of recreation facilities. This assistance is directed at creating and improving outdoor recreational opportunities and providing protection to valuable natural resources. The improvement grants are between \$15,000 and \$500,000 with a required minimum local match of 25 percent. Acquisition grants vary depending upon the value of property and local match amount; therefore, there is not a minimum or maximum amount. This grant is ideal for implementing community park plans and for land acquisition in the future. Applications are due in April and September of each year for acquisition projects and April of each year for development projects.

❖ ***State Water Trail Designation Program***

A new program that is under the direction of the MDNR that will classify certain water trails in communities as state water trails. Partnering groups and organizations would be vital in supporting the community in pursuing the grant. Funding sources are still being reviewed and analyzed; but funding is expected to be finalized in 2022.

❖ ***Michigan Recreation Passport***

Provides capital improvement plans and development projects in communities throughout Michigan. Projects must be in public recreation use for the life of the project rather than perpetuity. Indoor recreation facilities and existing park locations are eligible for the grant. The primary focus is on improving and renovating existing parks. The application deadline is April 1st, with a November grant award announcement. Duration of the grant usually run 3 years. Minimum grant request must be \$7,500 with a maximum request of \$45,000; there is a 25 percent match by the local municipality or organization. The 25 percent match can either be cash/credit (for locally assumed costs including labor and equipment) donations of goods and services from non-government entities, cash donations from non-governmental entities, or repurposed land.

❖ ***Community Development Block Grants (CDBG)***

Projects eligible for CDBG funding must be in a low-moderate income service area and/or provide access to the disabled to qualify. Investments using CDBG funds must provide a

documented benefit to low-moderate income households. Projects eligible for funding include public infrastructure improvements and those that provide ADA accessibility.

❖ ***Aquatic Habitat Grant Program***

The Aquatic Habitat Grant Program (AHCP) began in October 2013 and will operate each year that funding is available. A total of approximately \$1,250,000 will be available for the second-round of 2014 grand funding from the Game and Fish Protection Fund. The AHCP's purpose is to improve fish and other aquatic organism's populations by protecting intact and rehabilitating degraded aquatic habitat. Grant applications are due in November with award information available in April.

❖ ***Boating Infrastructure Grant***

Also offered from the MDNR providing federal assistance for the design and construction of public recreational harbor facilities. Grant funds are used to cover 75 percent of the total approved project costs for construction of infrastructure improvements.

❖ ***Waterways Program Grant***

Available for communities to provide both financial and technical assistance for design and construction of public recreational boating facilities (including state-sponsored harbors and mooring facilities). Information that is collected deals with traffic for the harbor and the last three financial summaries for the harbor. The amount depends on the base amount for the project; the grant normally provides 50 percent of the estimated project cost.

❖ ***Land and Water Conservation Fund (LWCF)***

LWCF provides funding assistance for communities to acquire and develop land for outdoor recreation. The minimum award is \$15,000 and the maximum of \$500,000 with a 50 percent local match. The eligibility criterion emphasizes preservation of natural resources such as waterways. This grant is ideal for implementing community park plans for land acquisition in the future.

❖ ***Transportation Alternatives Program (TAP)***

TAP is a competitive grant program that funds projects such as non-motorized paths, streetscapes and historic preservation of transportation facilities that enhance Michigan's intermodal transportation system and provide safe alternative transportation options. These investments support place-based economic development by offering transportation choices, promoting walkability and improving the quality of life. The program uses federal transportation funds designed by Congress for these types of activities. TAP grant funding requires matching funds of at least 20 percent of the eligible project cost.

❖ ***MEDC Patronicity Crowd Funding***

The Michigan Economic Development Corporation (MEDC) has developed an additional way of securing funding for community development projects by using crowdfunding to support developments. Communities, non-profits, and municipalities can submit projects by applying to the Patronicity campaign. The projects that meet the programs parameters and successfully crowd-fund their goal will receive a matching grant from the MEDC of up to \$50,000 .

❖ **Public-Private or Public-Public Partnerships**

Reduced funding at the public and private sector has created a need for various partnerships between public and private entities as well as between two or more public entities, to accommodate specialized large-scale recreation demands.

❖ **Donations**

Businesses, corporations, private clubs, community organizations, and individuals will often contribute to recreation and other improvement programs to benefit the communities in which they are located. Private sector contributions may be in the form of monetary contributions, the donation of land, the provision of volunteer services, or the contribution of equipment or facilities.

❖ **Foundations**

A foundation is a special non-profit legal entity established as a mechanism through which land, cash, and securities can be donated for the benefit of parks and recreation services. The assets are disbursed by the foundation Board of Directors according to a predetermined plan. These grant funding opportunities can be accessed through the *Michigan Foundation Directory*. The city has been successful demonstrating leveraging of these funds as match against other grant sources and demonstrating the ability to build capacity for long-term economic stability.

Conclusion

SLPR is an important and vital part of the quality of life for the residents within the service area. The vision of SLPR is to offer park, recreational facilities, and program opportunities that enhance the education, physical health, personal well-being, and social interactions within the community. The purpose of this five-year plan is to provide direction for the regional authority to effectively accomplish the vision set forth by the board of directors. Additionally, SLPR will be updating their charter in November 2022 by making an amendment to the charter to include revised standards and policies for the authority.

By implementing the changes outlined in the recreation plan, SLPR will continue to expand its programming and will continue to be a very supportive agent of providing recreational activities for communities directly in the SLPR service area.

Appendix A: Resolutions

Appendix B: Recreation Plans

4. City of Fenton Five-Year Recreation Plan
5. City of Linden Five-Year Recreation Plan
6. City of Fenton Township Five-Year Recreation Plan

Appendix C: Meeting Agendas and Public Notices



Pastor Peter Ahlersmeyer and his wife, Emily, pose for a family photo with their three children Addison, Quinn and Henry.

New pastor settling into new church

■Wants to engage Fenton area and remind them that 'Trinity' is a place of belonging

By Sharon Stone

Peter Ahlersmeyer is settling into his new role as pastor of Trinity Lutheran Church of Fenton. He came to Fenton from Concordia Lutheran Church in Ft. Wayne, Indiana. His installation service was Thursday, June 17 and on Sunday, June 20 he assumed the role of pastor.

"I'm excited to be here in Fenton and serve as Trinity Lutheran Church's new pastor," Ahlersmeyer said. "A lot of people have asked me why I would be so inclined to accept a new position as our world continues to grapple with this pandemic. But after giving the decision much prayer, with a new facility and members who are eager to share to love of Christ in this community, I feel that Trinity is positioned well to be a place where the Gospel is proclaimed in word

and deed.

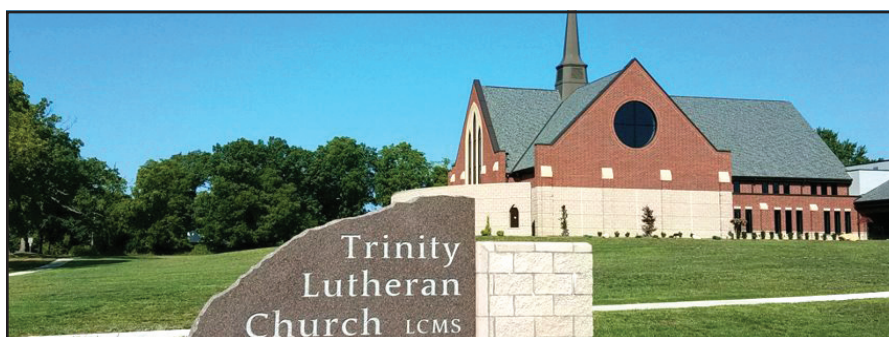
"I'm excited to see the direction and vision of this congregation and how God will use me to guide Trinity into a new season of ministry."

One of Ahlersmeyer's and the staff's goals is to find more ways to engage the Fenton and surrounding communities and to remind them that Trinity is a place of belonging.

"I want everyone to know that when they come to Trinity, they are a loved child of God who has worth and value," he said.

"Making the move to Fenton with me is my wife, Emily, and our three children Addison, Quinn, and Henry."

As for hobbies, Ahlersmeyer enjoys going to concerts with his wife and taking hikes with the family. He is also an avid record collector and has enjoyed exploring all the record stores in the Flint area.



Trinity Lutheran Church is at 1025 Main St., Fenton.

BUSINESS BRIEFS

COMPILED BY SHARON STONE

Southern Lakes Parks and Recreation Authority seeks public input on Master Plan

Southern Lakes Parks and Recreation Authority is preparing for the update of its Five-Year Master Plan. The Parks and Recreation Master plan is useful for the acquisition of properties and implementation of programming in the service area. As Fenton, Fenton Township and Linden continue to expand, creating recreational opportunities that support the residents of this area is important to maintaining strong community connections. The authority will have a survey available from Nov. 8 to Nov. 22. We invite you to add your input as we plan for the future. Go to <https://www.surveymonkey.com/r/SLPR2022Up> date to complete the survey.

MICHIGAN VOTES

LEGISLATIVE ACTIVITY

— Compiled by Sharon Stone —

MichiganVotes.org is a free, non-partisan website created by the Mackinac Center for Public Policy to provide concise, non-partisan, plain-English descriptions of every bill and vote in the Michigan House and Senate. This report was released Friday, Oct. 22.

Senate Bill 687: Create school choice tax credit and K-12 scholarships program

To create a K-12 "student opportunity scholarship program" that would allow individuals and companies to get a tax credit for contributing to a nonprofit "scholarship organization" that would provide grants to lower income families to pay tuition at a non-public school, or pay for other education expenses, services and supplies. Beneficiaries would get individual accounts from which families could draw money for permitted expenses. Senate Bill 688 and House Bill 5405 would

See **VOTES** on 25

NOW ACCEPTING RESERVATIONS FOR

THANKSGIVING DINNER

NOON TO 6:00PM



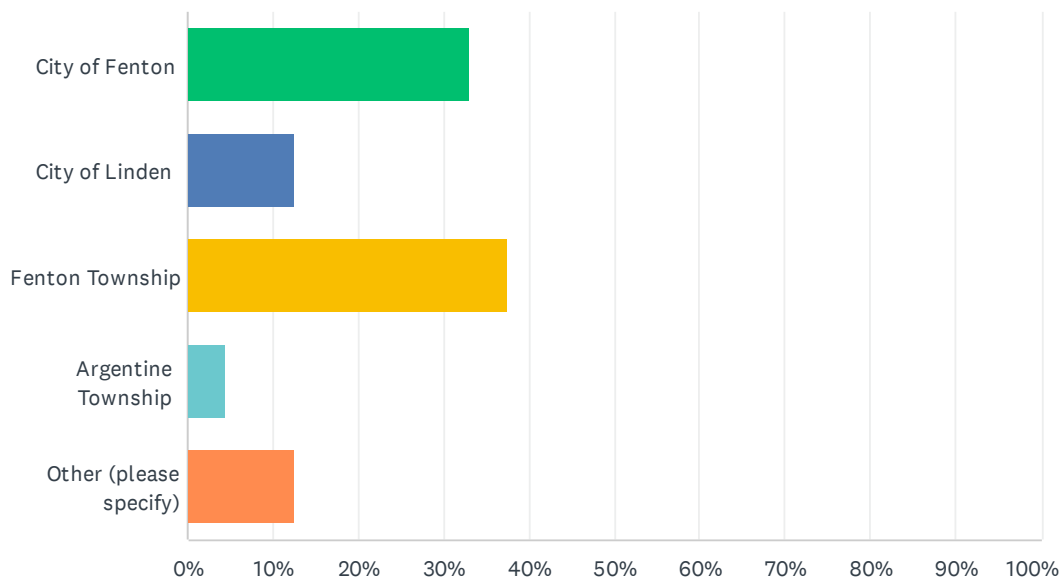
Thanksgiving Menu Online
Reservations Only • Call 810-750-9463

Fenton Hotel *tavern & grille*
302 N. LEROY ST. • FENTON • www.fentonhotel.com

Appendix D: Survey Responses

Q1 What municipality do you reside in?

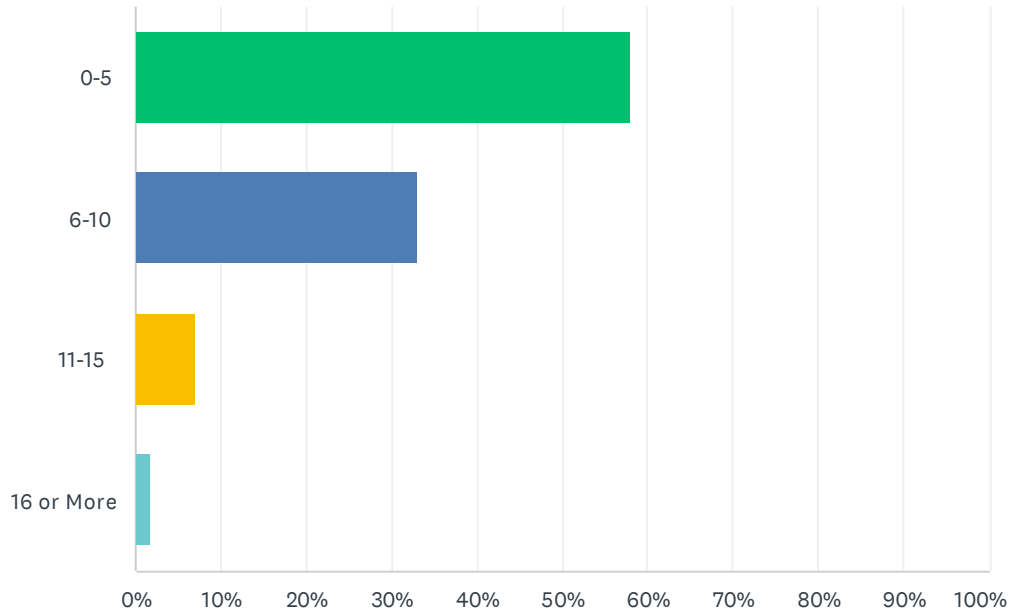
Answered: 112 Skipped: 0



ANSWER CHOICES	RESPONSES	
City of Fenton	33.04%	37
City of Linden	12.50%	14
Fenton Township	37.50%	42
Argentine Township	4.46%	5
Other (please specify)	12.50%	14
TOTAL		112

Q2 What distance (in miles) do you travel to participate in SLPR programming and events?

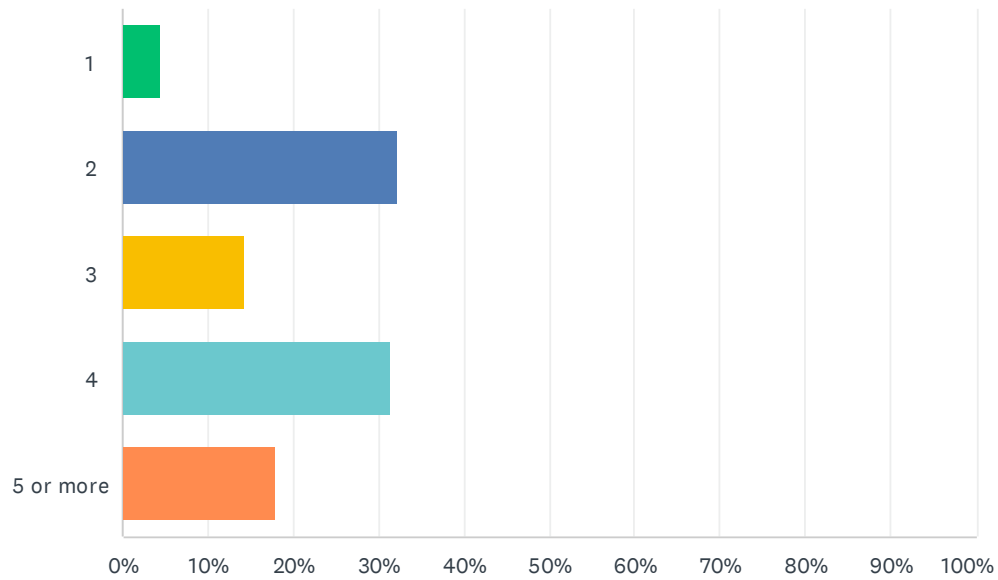
Answered: 112 Skipped: 0



ANSWER CHOICES	RESPONSES	
0-5	58.04%	65
6-10	33.04%	37
11-15	7.14%	8
16 or More	1.79%	2
TOTAL		112

Q3 How many people are in your household?

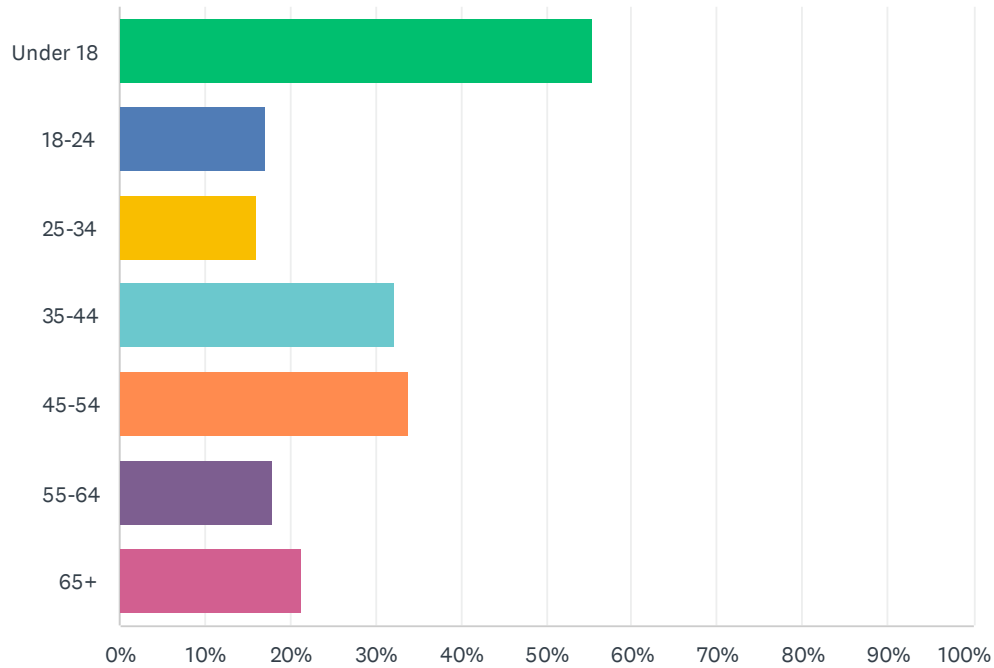
Answered: 112 Skipped: 0



ANSWER CHOICES	RESPONSES	
1	4.46%	5
2	32.14%	36
3	14.29%	16
4	31.25%	35
5 or more	17.86%	20
TOTAL		112

Q4 What are the age groups of those in your household? (Select All That Apply)

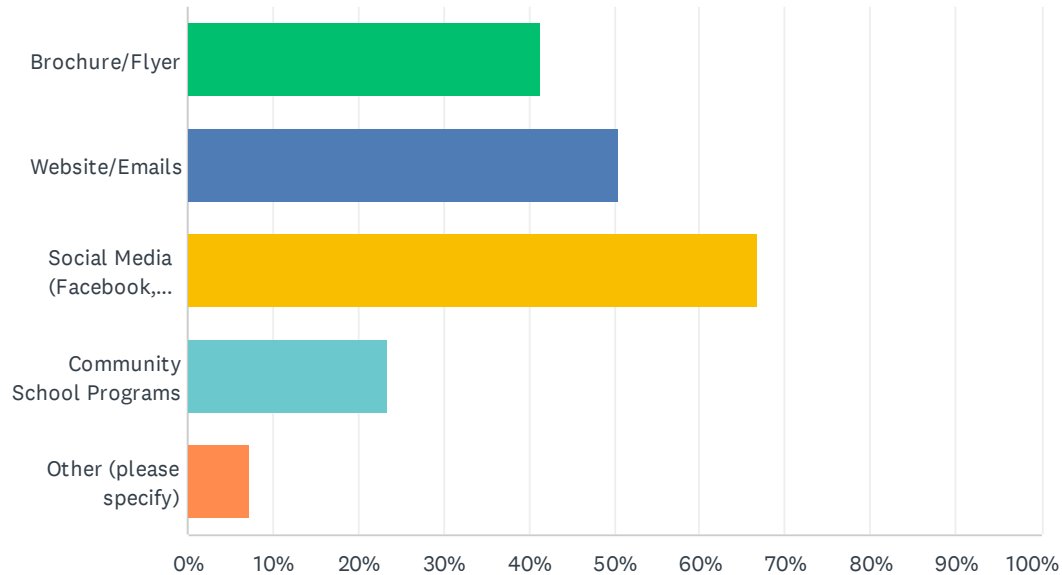
Answered: 112 Skipped: 0



ANSWER CHOICES	RESPONSES	
Under 18	55.36%	62
18-24	16.96%	19
25-34	16.07%	18
35-44	32.14%	36
45-54	33.93%	38
55-64	17.86%	20
65+	21.43%	24
Total Respondents: 112		

Q5 How do you get your information about SLPR programs and events? (Select All That Apply)

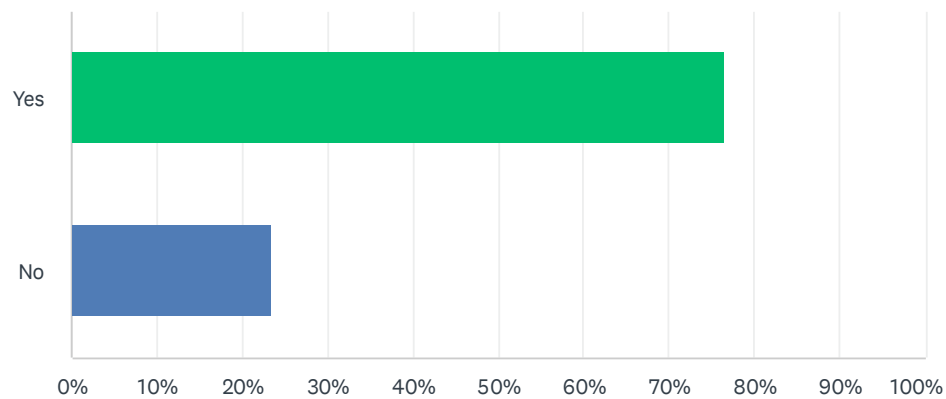
Answered: 111 Skipped: 1



ANSWER CHOICES	RESPONSES	
Brochure/Flyer	41.44%	46
Website/Emails	50.45%	56
Social Media (Facebook, TikTok, Instagram, SnapChat, Twitter)	66.67%	74
Community School Programs	23.42%	26
Other (please specify)	7.21%	8
Total Respondents: 111		

Q6 Overall are you satisfied with the current programs offered by SLPR?

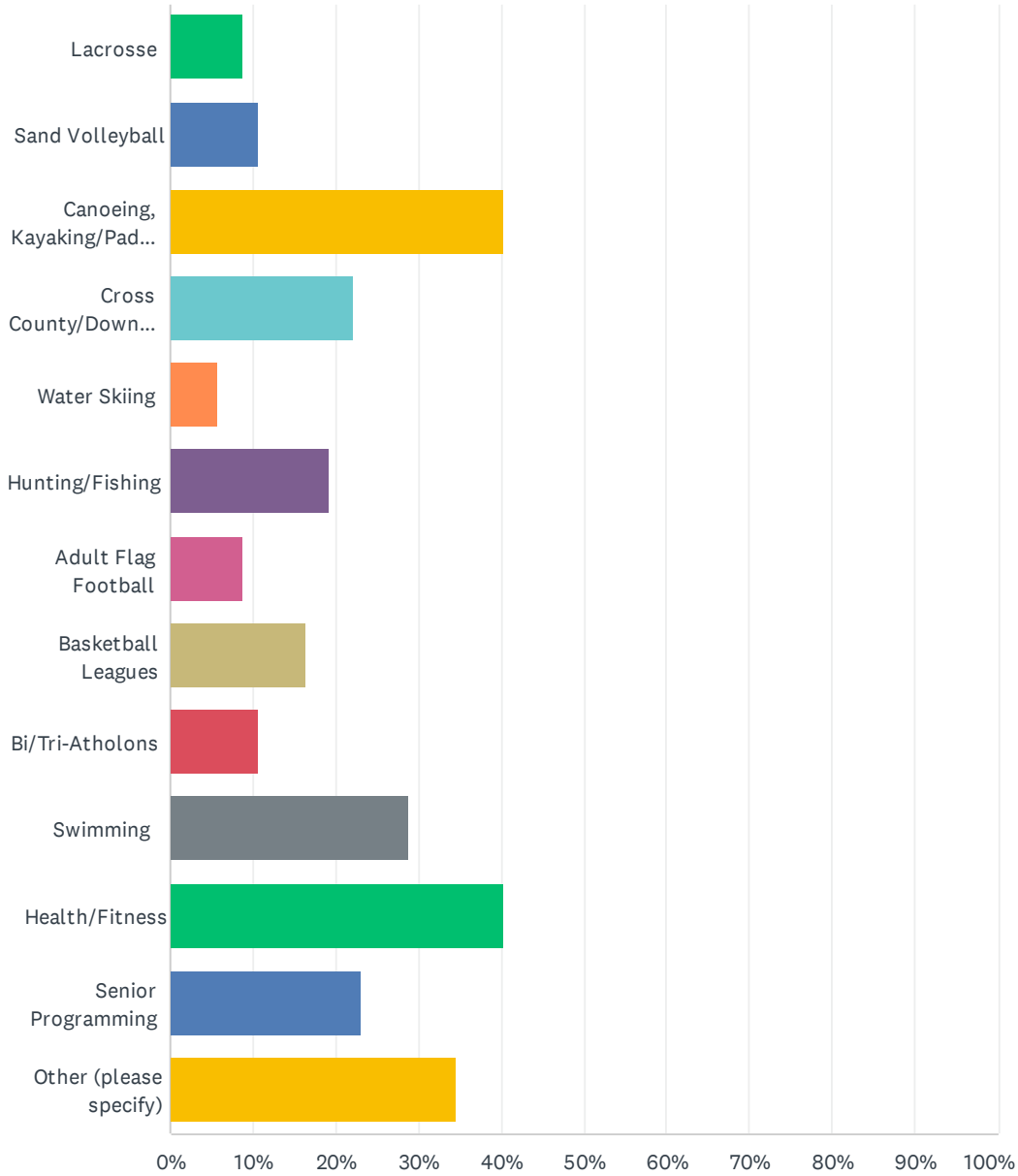
Answered: 107 Skipped: 5



ANSWER CHOICES	RESPONSES	
Yes	76.64%	82
No	23.36%	25
TOTAL		107

Q7 What types of programs and/or events would you attend if they were offered by SLPR? (Select All That Apply)

Answered: 104 Skipped: 8

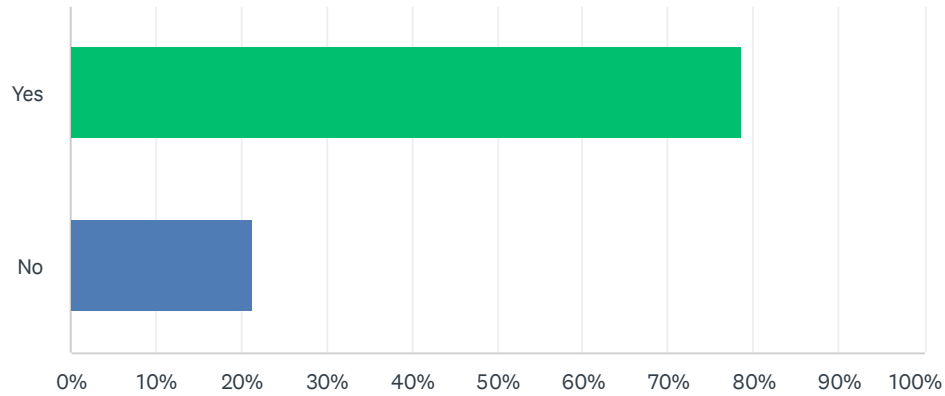


Southern Lakes Parks and Recreation Five Year Master Plan 2022-2027

ANSWER CHOICES	RESPONSES	
Lacrosse	8.65%	9
Sand Volleyball	10.58%	11
Canoeing, Kayaking/Paddle Boarding	40.38%	42
Cross County/Down Hill Skiing	22.12%	23
Water Skiing	5.77%	6
Hunting/Fishing	19.23%	20
Adult Flag Football	8.65%	9
Basketball Leagues	16.35%	17
Bi/Tri-Atholons	10.58%	11
Swimming	28.85%	30
Health/Fitness	40.38%	42
Senior Programming	23.08%	24
Other (please specify)	34.62%	36
Total Respondents: 104		

Q8 Would you like to see SLPR acquire property/facilities to expand its program offerings?

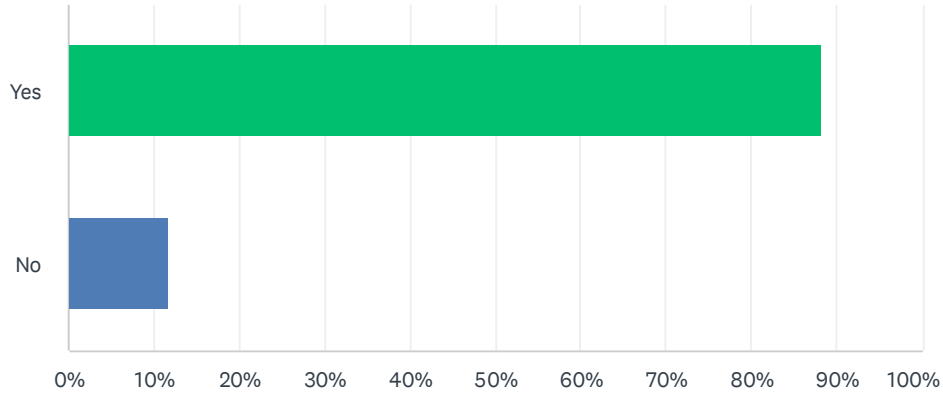
Answered: 108 Skipped: 4



ANSWER CHOICES	RESPONSES	
Yes	78.70%	85
No	21.30%	23
TOTAL		108

Q9 Would you like to see SLPR continue to work on the development of future corridors for a non-motorized pathway system?

Answered: 110 Skipped: 2



ANSWER CHOICES	RESPONSES	
Yes	88.18%	97
No	11.82%	13
TOTAL		110

Q10 Do you have any other feedback or comments about SLPR or its programs?

Answered: 41 Skipped: 71

Q10 Do you have any other feedback or comments about SLPR or its programs?

Answered: 41 Skipped: 71

#	RESPONSES	DATE
1	We love the pathway in Linden!	11/23/2021 8:20 AM
2	I greatly appreciate all of the work you do for our community. The support and opportunities you provide make the Fenton area feel like home.	11/22/2021 10:06 PM
3	Would like more communication. Mailings with descriptions, locations, updates. Community events that would involve and bring out community members .	11/22/2021 3:46 PM
4	doing a great job, can you offer teen programs?	11/22/2021 3:25 PM
5	Please get the path completed.	11/22/2021 2:46 PM
6	SLPR needs to build their own athletic facility.	11/22/2021 1:56 PM
7	Keep doing things out in the community. Make sure that when working within school district buildings, you allow for school groups access to their own facilities.	11/22/2021 1:36 PM
8	No	11/22/2021 1:34 PM
9	The people are great. Especially the Director. Ed's a great guy	11/22/2021 1:15 PM
10	seems like Fenton City gets the majority of activities. Not much going on in Linden. Would be interesting to see how funds are allocated.	11/21/2021 8:13 PM
11	Pathways are great connecting our communities.	11/21/2021 7:10 PM
12	Totally support the bike paths, those are a great addition to the community. We have so many great neighborhoods on Owen road between Fenton and Linden. But no way to travel between the neighborhoods, not even a sidewalk. Bike path or sidewalk would be amazing.	11/21/2021 11:33 AM
13	More educational offerings for adults.	11/21/2021 6:16 AM
14	Pricing has become high over the years for children's programs. Cost needs to be lower for most of us to participate	11/21/2021 5:03 AM
15	When you call someone to ask about a program it would be very helpful if they called you back!	11/21/2021 12:35 AM
16	great programs , good variety, love the downtown events, would like to see more day events (vs. 2 month commitment) or events catered toward when kids are out of school- Vetrans day, christmas break, etc.	11/18/2021 1:17 PM
17	Keep up the good work. See if you can get another beach, so Linden isn't so crowded. Also, consider an invasive species removal program.	11/18/2021 6:00 AM
18	I'd love to see SLPR collaborate more with other organizations.	11/17/2021 7:49 PM
19	Based on the Why, What, How model, I developed strategic objectives to guide the mission and activities of the Fenton Orchestra's for the next 5-10+ years. This excerpt from Bob Iger's book was the inspiration for developing this strategic planning model. It's simple and gives long-term guidance and clearly states the organization's goals to its constituencies. ABC News: https://abcnews.go.com/GMA/News/book-excerpt-bob-igers-ride-lifetime-lessons-learned/story?id=65791448&fbclid=IwAR34YIRoZYWOYh4gLL1r54t57XJcIENIsQKicFRVppKpFCqjH0KskxY1OPT4	11/17/2021 10:35 AM
20	I would be willing to volunteer my time and knowledge for any disc golf course installations. The current course at Silver Lake is in desperate need of a redesign and upkeep. With the	11/17/2021 10:10 AM

Southern Lakes Parks and Recreation Five Year Master Plan 2022-2027

growing popularity in disc golf we could use an additional 18 hole course in close proximity of Fenton. Thanks, Tom

21	Great program. Love this is available in our area. Would love to see more opportunities.	11/16/2021 9:02 AM
22	I believe that Mr. Koledo and the SLPR Board are doing a fine job.	11/16/2021 7:59 AM
23	SLPR should better support programming and communication for the development of the LAFF Pathway.	11/16/2021 7:18 AM
24	Get a park for skateboarding	11/15/2021 8:36 PM
25	bring the printed brochure back	11/12/2021 10:49 AM
26	More pathways	11/10/2021 8:03 PM
27	More community swim at Fenton high school	11/10/2021 4:09 PM
28	Disc golf Skate park BMX park	11/10/2021 11:11 AM
29	Please continue with the non-motorized pathway. It will greatly benefit the local community.	11/9/2021 2:27 PM
30	N/A	11/9/2021 9:44 AM
31	If faps properties are used, families who pay faps taxes should get the community rate.	11/9/2021 6:47 AM
32	Would love to see more walking paths or hiking, mountain bike trails	11/9/2021 6:46 AM
33	It would be great to have a skate park. Teens need a place	11/9/2021 3:28 AM
34	Connect the bike path to argentine	11/8/2021 10:07 PM
35	No	11/8/2021 10:01 PM
36	LAFF Pathway would be an amazing investment.	11/8/2021 9:54 PM
37	I'm still in favor of bringing the non-motorized trail north up Fenton Rd	11/8/2021 9:53 PM
38	Please continue to work and support LAFF pathway. Too dangerous to walk and bike around town. Traffic is bad and even driving is hazardous. Our community needs more/larger/longer non-motorized pathways connecting our communities.	11/8/2021 9:30 PM
39	It would be nice to see some additional program options for 65+ folks, in addition to what Loose provides.	11/8/2021 9:05 PM
40	Bike path is my highest priority!!	11/8/2021 8:46 PM
41	Need pickleball courts in SLPR area - grants available to secure monies to build either in county park or in the SLPR area - demand is there from adults up to seniors.	11/8/2021 8:23 PM

Appendix E: SLPR Charter

Appendix F: MDNR Documentation